



REGION 2 CHAMPIONSHIP SHOW

June 19-22, 2024
Santa Barbara, CA

Pre-Show Judges:

Terry Delridge- main ring
Angela Sullivan- working western

Region 2 Championship Judges:

Angela Sullivan
Bruce McCrea
Van Jacobsen

Terry Delbridge- working western

*updated 11/10/23



REGION 2
ARABIAN HORSE ASSOCIATION



Region 2 would like to invite you to the Region 2 Championship Show June 19 – 22, 2024 in beautiful Santa Barbara. Our theme this year is California Dreamin’.

We moved our show a week later to get reduced hotel rates. This is quite a savings for our exhibitors. Be sure to book your hotels early to beat the summer rush.

Our host hotel is Ramada Santa Barbara. See their ad in the premium. Rooms booked by May 23 get a 20% discount. Be sure to mention the Region 2 Arabian Horse Show.

We will again have a special class on Thursday afternoon. This is open to Amateurs, Trainers, Grooms, Parents or whoever wants to ride in it. Pairs class. Come in as Western, English, Hunter, Working Western, Costume or whatever, even Halter!!!! 50% payback to the winner, and 50% goes to the Region 2 Youth Judging team!!! The class will be held the last class of Thursday afternoon!!!

Saturday will be a fun day with lots going on. Thanks to the AHA of San Fernando Valley, we will have lots of things for people to do, meet an Arabian horse, TAIL tours and much more, so bring the family and enjoy!!!

We again are giving rose garlands to Champion and Reserve Champions, and either a garment bag or bridle bag to Champion.

We look forward to seeing you back at the Region 2 Show. It will not disappoint you!!!

Nancy Goertzen
Region 2 Director



REGION 2 ARABIAN PRE SHOW

June 19 & 20, 2024

REGION 2 ARABIAN CHAMPIONSHIP SHOW

JUNE 20, 21, & 22, 2024

JUDGES

TERRI DELBRIDGE– ALL Pre-Show Classes (except Working Western)..... Michigan
ANGELA SULLIVAN – Pre-Show Working Western, Championship Show panel (except Champ WW) Illinois
VAN JACOBSEN – Championship Show panel (except Champ Working Western) Michigan
DR. BRUCE MCCREA - Championship Show panel (except Champ Working Western) Oklahoma
TERRI DELBRIDGE - Championship Show Working Western Only Michigan
See page 4 for more information

REGION 2 ARABIAN HORSE ASSOCIATION OFFICERS

Director -- Nancy Goertzen
Secretary – Shawna McCune

Vice Director – Katie Russell
Treasurer – Kim Dahmen

SHOW OFFICIALS

SHOW MANAGER..... Margaret Rich (909) 240-4500
BARN MANAGER Ken West (559) 250-2124 westarabians@netscape.net
PATRON / VENDOR MANAGER Joyce Schroeder (805) 432-6890 joyce18089@sbcglobal.net
USEF STEWARD Adele Maurer
ANNOUNCER – Main Arena Jason Gillespie
ANNOUNCER – El Camino & Mountain View Arenas Penny Wardlaw
AWARDS Nancy Goertzen
PHOTOGRAPHERS Kelly Kenneally (707) 548-7949 www.kellykenneallyphotography.com
Kathy Stegman www.kathystegman.com
RING MASTER..... Dennis Eikenberry
VETERINARIAN..... Equine Athletes
TRAIL COURSE DESIGNER Don Lehman
SHOW SECRETARY..... Nancy Harvey
region2showsecretary@gmail.com



*Region 2 is happy to be returning to Earl Warren Showgrounds for the
Region 2 Pre-show and Region 2 Championships!*

*We want to welcome those back who have supported us in the past and
look forward to seeing many new faces as well.*

ENTRIES CLOSE MAY 24th

See page 13 for Post Entry Information

REGION 2 JUDGES INFORMATION and CHAMPIONSHIP SHOW CALL JUDGE ORDER

COMPARATIVE JUDGING will be used for Breeding/In-Hand classes in the Region 2 Pre and Championship Show. MOS scoring system will be used for the final placing of the Regional Breeding/In Hand & Performance Halter Championships. MOS Scoring (using three judges) will be used on all Championship Show classes except Ranch Riding, Ranch Rail, Reining, Trail Horse, and Western Horsemanship.

PRE-SHOW	CLASS NAME	CHAMPIONSHIP JUDGES #1, #2, #3
----	YEARLING FILLY SWEEPSTAKES	SULLIVAN, JACOBSEN, MCCREA
----	YEARLING COLT/GELDING SWEEPSTAKES	JACOBSEN, MCCREA, SULLIVAN
----	HA/AA YEARLING FILLY SWEEPSTAKES	MCCREA, JACOBSEN, SULLIVAN
----	HA/AA YEARLING COLT/GELDING SWEEPS	SULLIVAN, JACOBSEN, MCCREA
DELBRIDGE	STALLIONS	SULLIVAN, JACOBSEN, MCCREA
DELBRIDGE	STALLIONS – Performance Halter ATH	MCCREA, JACOBSEN, SULLIVAN
DELBRIDGE	MARES	JACOBSEN, SULLIVAN, MCCREA
DELBRIDGE	MARES – AOTH	MCCREA, SULLIVAN, JACOBSEN
DELBRIDGE	MARES – Performance Halter ATH	SULLIVAN, JACOBSEN, MCCREA
DELBRIDGE	GELDINGS	JACOBSEN, MCCREA, SULLIVAN
DELBRIDGE	GELDINGS – AOTH	SULLIVAN, MCCREA, JACOBSEN
DELBRIDGE	GELDINGS – Performance Halter ATH	MCCREA, JACOBSEN, SULLIVAN
DELBRIDGE	HA/AA MARES	JACOBSEN, SULLIVAN, MCCREA
----	HA/AA MARES – AOTH	MCCREA, SULLIVAN, JACOBSEN
DELBRIDGE	HA/AA MARES – Performance Halter ATH	SULLIVAN, JACOBSEN, MCCREA
DELBRIDGE	HA/AA GELDINGS	JACOBSEN, MCCREA, SULLIVAN
----	HA/AA GELDINGS – AOTH	MCCREA, SULLIVAN, JACOBSEN
DELBRIDGE	HA/AA GELDINGS – Performance Halter ATH	SULLIVAN, JACOBSEN, MCCREA
DELBRIDGE	PERFORMANCE HALTER – ATH	SULLIVAN, JACOBSEN, MCCREA
DELBRIDGE	COUNTRY ENG PL – Open/JR Horse/Ladies &/Gents	JACOBSEN, SULLIVAN, MCCREA
DELBRIDGE	COUNTRY ENGLISH PL – AATR/AO/JO/JTR	SULLIVAN, MCCREA, JACOBSEN
DELBRIDGE	COUNTRY PLEASURE DRIVING - Open	MCCREA, SULLIVAN, JACOBSEN
DELBRIDGE	ENGLISH PLEASURE - Open/Junior Horse	MCCREA, JACOBSEN, SULLIVAN
DELBRIDGE	ENGLISH PLEASURE – AAOTH/ATR/JTR	JACOBSEN, SULLIVAN, MCCREA
DELBRIDGE	ENGLISH SHOW HACK	SULLIVAN, MCCREA, JACOBSEN
DELBRIDGE	ENGLISH SHOW HACK – ATR	MCCREA, JACOBSEN, SULLIVAN
DELBRIDGE	HUNTER PLEASURE - Open/JR Horse/ Ladies & Gents	SULLIVAN, JACOBSEN, MCCREA
DELBRIDGE	HUNTER PLEASURE – AATR/AO/JO/JTR	JACOBSEN, MCCREA, SULLIVAN
DELBRIDGE	LADIES SIDE SADDLE - Open	JACOBSEN, MCCREA, SULLIVAN
DELBRIDGE	LADIES SIDE SADDLE – ATR	SULLIVAN, JACOBSEN, MCCREA
DELBRIDGE	MOUNTED NATIVE COSTUME	MCCREA, SULLIVAN, JACOBSEN
DELBRIDGE	MOUNTED NATIVE COSTUME - ATR	JACOBSEN, SULLIVAN, MCCREA
DELBRIDGE	PARK HORSE	JACOBSEN, MCCREA, SULLIVAN
DELBRIDGE	PARK HORSE - ATR	SULLIVAN, MCCREA, JACOBSEN
DELBRIDGE	PLEASURE DRIVING - Open	JACOBSEN, MCCREA, SULLIVAN
DELBRIDGE	WESTERN PLEASURE - Open/Jr Horse/ Ladies & Gents	SULLIVAN, MCCREA, JACOBSEN
DELBRIDGE	WESTERN PLEASURE - AATR/AO/JO/JTR	JACOBSEN, MCCREA, SULLIVAN
DELBRIDGE	WALK TROT COUNTRY/ENGLISH PLEASURE	MCCREA, SULLIVAN, JACOBSEN
DELBRIDGE	WALK TROT HUNTER PLEASURE	SULLIVAN, JACOBSEN, MCCREA
DELBRIDGE	WALK JOG WESTERN PLEASURE	JACOBSEN, MCCREA, SULLIVAN
DELBRIDGE	WALK TROT HUNTER SEAT EQUITATION	SULLIVAN, MCCREA, JACOBSEN
DELBRIDGE	WALK TROT SADDLE SEAT EQUITATION	MCCREA, JACOBSEN, SULLIVAN
DELBRIDGE	WALK JOG WESTERN SEAT EQUITATION	JACOBSEN, SULLIVAN, MCCREA
DELBRIDGE	HUNTER SEAT EQUITATION - JTR/ Medal	SULLIVAN, JACOBSEN, MCCREA
DELBRIDGE	SADDLE SEAT EQUITATION - JTR/ Medal	MCCREA, SULLIVAN, JACOBSEN
DELBRIDGE	SHOWMANSHIP	MCCREA, JACOBSEN, SULLIVAN
SULLIVAN	RANCH HORSE RIDING – Open/ATR	DELBRIDGE
SULLIVAN	RANCH RAIL PLEASURE – Open/ATR	DELBRIDGE
SULLIVAN	REINING HORSE – Open/ATR	DELBRIDGE
SULLIVAN	REINING SEAT EQUITATION – JTR / Medal	----
SULLIVAN	TRAIL HORSE – English & Western	DELBRIDGE
SULLIVAN	WESTERN HORSEMANSHIP - JTR/ Medal/ ATR	DELBRIDGE
SULLIVAN	RANCH HORSE CONFIRMATION	DELBRIDGE

REGION 2 ARABIAN PRE-SHOW

Tentative Schedule

WEDNESDAY		JUNE 19 — 8:00 AM	MAIN ARENA
1	\$50	1	ARABIAN MARES – 2 Yrs/Over Open
2	\$50	400	HA/AA MARES – 2 Yrs/Over Open
3	\$50	918	SHOWMANSHIP - JTH 18 Yrs/Under
4	\$50	315	ARABIAN ENGLISH SHOW HACK – Open
5	\$40	925	SADDLE SEAT EQUITATION – JTR 18 Yrs/Under
6	\$50	733	HA/AA HUNTER PLEASURE – Ladies & Gentlemen to Ride
7	\$40	924	AHA SADDLE SEAT EQUITATION MEDAL CLASS – JTR 18 Yrs/Under
8	\$50	111	ARABIAN COUNTRY ENGLISH PL – Junior Horse 5 Yrs/Under
9	\$40	890	A/HA/AA WALK-TROT HUNTER/COUNTRY ENGLISH/ENGLISH PLEASURE - Riders 10/Under
10	\$50	620	HA/AA WESTERN PLEASURE – Ladies & Gentlemen to Ride
11	\$50	2248	ARABIAN HUNTER PLEASURE – ATR Select
12	\$50	204	ARABIAN WESTERN PLEASURE - Junior Horse
13	\$50	2648	HA/AA COUNTRY ENGLISH PLEASURE – ATR Select
14	\$50	75	ARABIAN ENGLISH PLEASURE – Open
15	\$50	640	HA/AA WESTERN PLEASURE – AAOTR 19 Yrs/Over
16	\$50	305	ARABIAN HUNTER PLEASURE - Jr. Horse
17	\$40	939	HUNTER SEAT EQUITATION NOT TO JUMP – JTR 18 Yrs/Under
18	\$50	165	ARABIAN LADIES SIDE SADDLE – Open
19	\$40	938	AHA HUNTER SEAT EQUITATION MEDAL NOT TO JUMP CLASS – JTR 18 Yrs/Under
181			TBA

WEDNESDAY AFTERNOON		Classes not to start before 12:00 noon	MAIN ARENA
20	\$50	130	ARABIAN COUNTRY PLEASURE DRIVING -- Open
21	\$50	450	HA/AA GELDINGS – 2 Yrs/Over Open
22	\$50	26	ARABIAN GELDINGS – 2 Yrs/Over Open
23	\$50	556	HA/AA COUNTRY ENGLISH PLEASURE – Junior Horse 5/Und
24	\$50	115	ARABIAN COUNTRY ENGLISH PLEASURE – AAOTR 19/Over
25	\$50	754	HA/AA ENGLISH SHOW HACK – Open
26	\$40	890	A/HA/AA WALK-JOG WESTERN PLEASURE – Riders 10
27	\$50	636	HA/AA WESTERN PLEASURE - Junior Horse 5 Yrs/Under
28	\$50	752	HA/AA HUNTER PLEASURE – AAOTR 19 Yrs & Over
29	\$50	290	ARABIAN HUNTER PLEASURE – Ladies & Gentlemen to Ride
30	\$50	524	HA/AA ENGLISH PLEASURE – ATR
31	\$40	540	ARABIAN COUNTRY ENGLISH PLEASURE – JTR 18 Yrs/Under
32	\$50	3148	HA/AA WESTERN PLEASURE – ATR Select
33	\$40	1329	ARABIAN HUNTER PLEASURE – JTR 18 Yrs/Under
34	\$50	190	ARABIAN WESTERN PLEASURE – Ladies & Gentlemen to Ride
35	\$50	2958	HA/AA HUNTER PLEASURE – ATR Select
36	\$40	1335	HA/AA COUNTRY ENGLISH PLEASURE - JTR 18 Yrs/Under
37	\$50	907	A/HA/AA WALK-JOG WESTERN SEAT EQUITATION – Riders 10 Yrs/Under
38	\$50	2251	ARABIAN HUNTER PLEASURE – AATR 19 Yrs/Over
39	\$50	748	HA/AA HUNTER PLEASURE – Junior Horse 5 Yrs/Under
40	\$50	1948	ARABIAN WESTERN PLEASURE – ATR Select
182	\$100		TBA

ENTRIES CLOSE MAY 24th

see page 13 for more information

REGION 2 ARABIAN PRE-SHOW

Tentative Schedule

WEDNESDAY EVENING Classes will not start before 6:00 pm MAIN ARENA

41	\$50	575	HA/AA COUNTRY PLEASURE DRIVING – Open
42	\$50	14	ARABIAN STALLION BREEDING – 2 Yrs/Over Open
43	\$50	150	ARABIAN MOUNTED NATIVE COSTUME – Open
44	\$50	2641	HA/AA COUNTRY ENGLISH PLEASURE – AATR 19 Yrs/Over
45	\$50	95	ARABIAN COUNTRY ENGLISH PLEASURE – Open
46	\$40	2956	HA/AA HUNTER PLEASURE – JTR 18 Yrs/Under
47	\$50	605	HA/AA LADIES SIDE SADDLE
48	\$50	1951	ARABIAN WESTERN PLEASURE – AATR 19 Yrs/Over
49	\$50	500	HA/AA PARK HORSE – Open
50	\$50	83	ARABIAN ENGLISH PLEASURE – ATR
51	\$50	620	HA/AA WESTERN PLEASURE – Open
52	\$50	1851	ARABIAN COUNTRY ENGLISH PLEASURE – AATR 19 Yrs/Over
53	\$50	590	HA/AA MOUNTED NATIVE COSTUME – Open
54	\$50	2961	HA/AA HUNTER PLEASURE – AATR 19 Yrs/Over
55	\$50	60	ARABIAN PARK HORSE – Open
56	\$50	3151	HA/AA WESTERN PLEASURE – AATR 19 Years/Over
57	\$50	515	HA/AA ENGLISH PLEASURE – Open
58	\$50	290	ARABIAN HUNTER PLEASURE – Open
59	\$50	560	HA/AA HUNTER PLEASURE – Open
183	\$100		TBA

THURSDAY MORNING JUNE 20 - 8:00 AM MAIN ARENA

60	\$50	1156	HA/AA PERFORMANCE HALTER MARES – 3 Yrs/Over ATH
61	\$50	1152	ARABIAN PERFORMANCE HALTER MARES – 3 Yrs/Over ATH
62	\$50	1146	HA/AA PERFORMANCE HALTER GELDINGS – 3 Yrs/Over ATH
63	\$50	2078	ARABIAN PERFORMANCE HALTER GELDINGS – 3 Yrs/Over ATH
64	\$50	2060	ARABIAN PERFORMANCE HALTER STALLIONS – 3 Yrs/Over ATH
65	\$40	1327	ARABIAN WESTERN PLEASURE - JTR 18 Yrs/Under
66	\$40	907	A/HA/AA WALK-TROT HUNTER SEAT/SADDLE SEAT EQUITATION –10/Under
67	\$50	90	ARABIAN ENGLISH PLEASURE – Junior Horse 5 Yrs/Under
68	\$50	290	ARABIAN HUNTER PLEASURE - Limit Horse
69	\$40	1337	HA/AA WESTERN PLEASURE – JTR 18 Yrs/Under
70	\$50	540	HA/AA COUNTRY ENGLISH PLEASURE - Open
71	\$50	309	ARABIAN HUNTER PLEASURE - AAOTR 19 Yrs/Over
72	\$50	190	ARABIAN WESTERN PLEASURE – Open
73	\$50	631	HA/AA ENGLISH PLEASURE – Junior Horse 5 Yrs/Under
74	\$50	1848	ARABIAN COUNTRY ENGLISH PLEASURE – ATR Select
75	\$50	759	HA/AA ENGLISH SHOW HACK - ATR
76	\$40	956	UPHA ARABIAN BREEDS CHALLENGE CUP – JTR 17 Yrs/Under
76A	\$50	939	A/HA/AA Hunter Seat Equitation AATR
184	\$100		TBA

REGION 2 ARABIAN PRE-SHOW

Tentative Schedule

91 \$30 TRAIL HORSE SCHOOLING PRACTICE & WARM-UPS

**EACH horse entered in a Trail class will be assessed \$20 PER HORSE/ PER SHOW (walk-trot exempt)*

TUESDAY 1:00 pm to 6:00 pm

EL CAMINO ARENA

El Camino Arena will be OPEN to Trail Horses Only for Schooling Practice

WEDNESDAY MORNING 7:00 am to 7:45 am

EL CAMINO ARENA

El Camino Arena will be OPEN to Trail Horses Only for Schooling & Warming Up

WEDNESDAY

English Trail Classes Start - 8:00 A.M.

EL CAMINO ARENA

** Walk through 7:45 AM*

77 \$50 179 ARABIAN ENGLISH TRAIL HORSE – Open

78 \$50 691 HA/AA ENGLISH TRAIL HORSE – Open

79 \$50 183 ARABIAN ENGLISH TRAIL HORSE – ATR

80 \$50 695 HA/AA ENGLISH TRAIL HORSE - ATR

30 Minute Break – Reset Course

WEDNESDAY

Western Trail Classes TBA Start – estimate 10:00 am

EL CAMINO ARENA

** Walk Through Approximately 10:00 am*

81 \$50 210 ARABIAN WESTERN TRAIL HORSE – Open

82 \$50 645 HA/AA WESTERN TRAIL HORSE – Open

83 \$50 216 ARABIAN WESTERN TRAIL HORSE – ATR

84 \$50 651 HA/AA WESTERN TRAIL HORSE - ATR

Reset Course & Walk Through

85 \$50 219 ARABIAN WESTERN TRAIL HORSE – Junior Horse 5 Yrs/Under

86 \$50 654 HA/AA WESTERN TRAIL HORSE – Junior Horse 5 Yrs/Under

Reset Course & Walk Through

87 \$40 1027 A/HA/AA WESTERN WALK/JOG TRAIL HORSE - 10/Under

WEDNESDAY AFTERNOON

RANCH TRAIL - START TIME TBA

EL CAMINO ARENA

*Reset Course & *Walk Through*

88 \$50 1778 ARABIAN VRH RANCH TRAIL HORSE – Open

89 \$50 2352 HA/AA VRH RANCH TRAIL HORSE – Open

90 \$50 1780 ARABIAN VRH RANCH HORSE TRAIL ATR

91 \$50 2362 HA/AA VRH RANCH HORSE TRAIL ATR

THURSDAY 8AM

RANCH CONFORMATION & RANCH RAIL & HORSEMANSHIP

MOUNTAIN VIEW

92 \$50 2734 ARABIAN VRH RANCH HORSE CONFORMATION – 3 Yrs/Over Open

93 \$50 3854 HA/AA VRH RANCH HORSE CONFORMATION – 3 Yrs/Over

94 \$50 3006 ARABIAN RANCH HORSE RIDING - Open (Pattern #3)

95 \$50 3026 HA/AA RANCH HORSE RIDING - Open (Pattern #3)

96 \$50 3008 ARABIAN RANCH HORSE RIDING – ATR (Pattern #2)

97 \$50 3028 HA/AA RANCH HORSE RIDING – ATR (Pattern #2)

98 \$50 1733 ARABIAN RANCH HORSE RAIL PLEASURE - OPEN

99 \$50 2344 HA/AA RANCH HORSE RAIL PLEASURE - OPEN

100 \$50 1735 ARABIAN RANCH HORSE RAIL PLEASURE – ATR

101 \$50 2346 HA/AA RANCH HORSE RAIL PLEASURE - ATR

102 \$50 951 WESTERN HORSEMANSHIP - ATR

103 \$50 950 AHA WESTERN HORSEMANSHIP JTR Medal Class

185 TBA

REGION 2 ARABIAN CHAMPIONSHIP SHOW

Tentative Schedule

THURSDAY AFTERNOON			JUNE 20 - 1:00 PM	MAIN ARENA
201	\$75	117	Reg 2 ARABIAN PLEASURE DRIVING CHAMPIONSHIP	
202	\$75	457	Reg 2 HA/AA GELDING IN-HAND CHAMPIONSHIP – 2 Yrs/Over AOTH	
203	\$75	27	Reg 2 ARABIAN GELDING IN-HAND CHAMPIONSHIP – 2 Years & Over	
204	\$75	166	Reg 2 ARABIAN LADIES SIDE SADDLE CHAMPIONSHIP	
205	\$75	316	Reg 2 ARABIAN ENGLISH SHOW HACK CHAMPIONSHIP – Open	
206			LEADLINE	
207	\$60	1649	Reg 2 ARABIAN WESTERN PLEASURE CHAMPIONSHIP – JTR Select 18 Yrs/Under Select 18 Yrs/Under	
208	\$60	908	Reg 2 A/HA/AA WALK-TROT SADDLE SEAT EQUITATION CHAMPIONSHIP- 10Yrs/Under	
209	\$60	1847	Reg 2 ARABIAN COUNTRY ENGLISH PLEASURE CHAMPIONSHIP - JTR 18 Yrs/Under	
210	\$75	1647 *	Reg 2 ARABIAN ENGLISH PLEASURE CHAMPIONSHIP – AAOTR 19 Yrs/Over	
211	\$75	558 *	Reg 2 HA/AA COUNTRY ENGLISH PLEASURE CHAMPIONSHIP–AATR 19 Yrs/Over	
212	\$60	2135	Reg 2 ARABIAN HUNTER PLEASURE CHAMPIONSHIP - JOTR 18 Yrs/Under	
213	\$75	1639 *	Reg 2 HA/AA HUNTER PLEASURE CHAMPIONSHIP - AAOTR 55 Yrs/Over	
214	\$60	2146	Reg 2 HA/AA ENGLISH PLEASURE CHAMPIONSHIP – JTR 18 Yrs/Under	
215	\$75	1643 *	Reg 2 ARABIAN WESTERN PLEASURE CHAMPIONSHIP- AAOTR 19-54 Yrs	
216	\$60	2152	Reg 2 HA/AA COUNTRY ENGLISH PLEASURE CHAMPIONSHIP – JTR 18 Yrs/Under	
217	\$75	359 *	Reg 2 HA/AA ENGLISH PLEASURE CHAMPIONSHIP - AAOTR 19 Yrs/Over	
218	\$60	940	Reg 2 HUNTER SEAT EQUITATION NOT TO JUMP CHAMPIONSHIP- JTR 18 Yrs/Under	
219	\$75	2237	Reg 2 ARABIAN HUNTER PLEASURE CHAMPIONSHIP – AATR Select	
220	\$60	760	Reg 2 HA/AA ENGLISH SHOW HACK JTR	
351	\$175		TBA	
350	\$100		PRO/AM PLEASURE CLASS	

THURSDAY EVENING — ENJOY YOUR EVENING!!!

FRIDAY MORNING			JUNE 21 - 8:00AM	MAIN ARENA
221	\$75	576	Reg 2 HA/AA COUNTRY PLEASURE DRIVING CHAMPIONSHIP	
222	\$75	29 *	Reg 2 ARABIAN GELDING IN-HAND CHAMPIONSHIP - 2 Yrs/Over AOTH	
223	\$75	1078 *	Reg 2 ABS HA/AA YEARLING COLT/GELDING SWEEPSTAKES	
224	\$75	755	Reg 2 HA/AA ENGLISH SHOW HACK CHAMPIONSHIP – Open	
225	\$75	1646 *	Reg 2 ARABIAN COUNTRY ENGLISH PLEASURE CHAMPIONSHIP- AAOTR 19-54 Yrs	
226	\$60	3143	Reg 2 HA/AA WESTERN PLEASURE CHAMPIONSHIP – JTR Select 18 Yrs/Under	
227	\$75	1639 *	Reg 2 HA/AA HUNTER PLEASURE CHAMPIONSHIP - AAOTR 19-54 Yrs	
228	\$60	926	Reg 2 SADDLE SEAT EQUITATION CHAMPIONSHIP - JTR 18 Yrs/Under	
229	\$75	112 *	Reg 2 ARABIAN COUNTRY ENGLISH PLEASURE CHAMPIONSHIP - Junior Horse 5/Under	
230	\$60	2247	Reg 2 ARABIAN HUNTER PLEASURE CHAMPIONSHIP - JTR 18 Yrs/Under	
231	\$60	589	Reg 2 A/HA/AA WALK TROT COUNTRY ENGLISH/ENGLISH PLEASURE CHAMP-10/Under	
232	\$75	1172	Reg 2 HA/AA COUNTRY ENGLISH PLEASURE CHAMPIONSHIP – ATR Select	
233	\$75	749 *	Reg 2 HA/AA HUNTER PLEASURE CHAMPIONSHIP - Junior Horse 5 Yrs/Under	
234	\$60	908	Reg 2 A/HA/AA WALK-TROT HUNTER/SADDLE SEAT EQUITATION CHAMPIONSHIP - 10 Yrs/Under	
235	\$75	1646 *	Reg 2 ARABIAN COUNTRY ENGLISH PLEASURE CHAMPIONSHIP- AAOTR 55 Yrs/Over	
236	\$75	621	Reg 2 HA/AA WESTERN PLEASURE CHAMPIONSHIP - Ladies & Gentlemen to Ride	
236A	\$75	940	Reg 2 A/HA/AA HUNTER SEAT EQUITATION AATR	
352	\$175		TBA	

REGION 2 ARABIAN CHAMPIONSHIP SHOW

Tentative Schedule

FRIDAY AFTERNOON			Classes will not start before 12:00 noon	MAIN ARENA
237	\$75	131	Reg 2 ARABIAN COUNTRY PLEASURE DRIVING CHAMPIONSHIP	
238	\$75	407 *	Reg 2 HA/AA MARE BREEDING CHAMPIONSHIP – 2 Yrs/Over AOTH	
239	\$75	451	Reg 2 HA/AA GELDING IN-HAND CHAMPIONSHIP - 2 Yrs/Over	
240	\$75	606	Reg 2 HA/AA LADIES SIDE SADDLE CHAMPIONSHIP	
241	\$75	76	Reg 2 ARABIAN ENGLISH PLEASURE CHAMPIONSHIP – Open	
242	\$60	2637	Reg 2 HA/AA COUNTRY ENGLISH PLEASURE CHAMPIONSHIP – JOTR 18/Under	
243	\$75	1644 *	Reg 2 ARABIAN HUNTER PLEASURE CHAMPIONSHIP - AAOTR 55 Yrs/Over	
244	\$60	2165	Reg 2 HA/AA WESTERN PLEASURE CHAMPIONSHIP - JTR 18 Yrs/Under	
245	\$75	1166	Reg 2 ARABIAN WESTERN PLEASURE CHAMPIONSHIP – AATR Select	
246	\$60	2112	Reg 2 ARABIAN COUNTRY ENGLISH PLEASURE CHAMPIONSHIP - JOTR 18 Yrs/Under	
247	\$75	913	Reg 2 A/HA/AA WALK TROT WESTERN SEAT EQUITATION CHAMPIONSHIP–10/Under	
248	\$60	2953	Reg 2 HA/AA HUNTER PLEASURE CHAMPIONSHIP – JTR Select 18 Yrs/Under	
249	\$75	1637 *	Reg 2 HA/AA WESTERN PLEASURE CHAMPIONSHIP - AAOTR 19-54 Yrs	
250	\$60	1649	Reg 2 ARABIAN WESTERN PLEASURE CHAMPIONSHIP - JOTR 18 Yrs/Under	
251	\$75	557 *	Reg 2 HA/AA COUNTRY ENGLISH PLEASURE CHAMPIONSHIP - Junior Horse 5 & Under	
252	\$75	1168	Reg 2 ARABIAN COUNTRY ENGLISH PLEASURE CHAMPIONSHIP – AATR Select	
253	\$75	306 *	Reg 2 ARABIAN HUNTER PLEASURE CHAMPIONSHIP - Junior Horse 5 Yrs/Under	
254	\$60	84	Reg 2 ARABIAN ENGLISH PLEASURE CHAMPIONSHIP – JTR 18 Yrs/Under	
255	\$75	205 *	Reg 2 ARABIAN WESTERN PLEASURE JUNIOR HORSE CHAMP MARES, GELDINGS & STALLIONS	
353	\$75		TBA	

FRIDAY EVENING			Classes will not start before 6:00 pm	MAIN ARENA
256	\$75	562	Reg 2 HA/AA PLEASURE DRIVING CHAMPIONSHIP	
257	\$75	2	Reg 2 ARABIAN MARE BREEDING CHAMPIONSHIP - 3 Years & Over	
258	\$75	2	Reg 2 ARABIAN MARE BREEDING CHAMPIONSHIP - 2 Years Old	
259	\$75	1076 *	Reg 2 ABS ARABIAN YEARLING FILLY SWEEPSTAKES	
260	\$75	15	Reg 2 ARABIAN STALLION BREEDING CHAMPIONSHIP – 3 Years & Over	
261	\$75	15	Reg 2 ARABIAN STALLION BREEDING CHAMPIONSHIP – 2 Years Old	
262	\$75	157	Reg 2 ARABIAN MOUNTED NATIVE COSTUME CHAMPIONSHIP – ATR	
263	\$75	541	Reg 2 HA/AA COUNTRY ENGLISH PLEASURE CHAMP – Open	
264	\$75	291	Reg 2 ARABIAN HUNTER PLEASURE CHAMPIONSHIP – Ladies & Gentlemen	
265	\$75	2568	Reg 2 ARABIAN COUNTRY ENGLISH PLEASURE CH – Ladies & Gentlemen to Ride	
266	\$75	1637 *	Reg 2 HA/AA WESTERN PLEASURE CHAMPIONSHIP – AAOTR 55 Yrs/Over	
267	\$75	734	Reg 2 HA/AA HUNTER PLEASURE CHAMPIONSHIP – Open	
268	\$75	1644 *	Reg 2 ARABIAN HUNTER PLEASURE CHAMPIONSHIP - AAOTR 19-54 Yrs	
269	\$75	501	Reg 2 HA/AA PARK HORSE CHAMPIONSHIP	
270	\$75	66	Reg 2 ARABIAN PARK HORSE CHAMPIONSHIP – ATR	
271	\$75	191	Reg 2 ARABIAN WESTERN PLEASURE CHAMPIONSHIP – Open	
272	\$75	595	Reg 2 HA/AA MOUNTED NATIVE COSTUME CHAMPIONSHIP – ATR	
354	\$175		TBA	

REGION 2 ARABIAN CHAMPIONSHIP SHOW

Tentative Schedule

SATURDAY MORNING JUNE 22 - 8:00AM

MAIN ARENA

273	\$75	1517	Reg 2 ARABIAN PERFORMANCE HALTER MARE CHAMPIONSHIP – 3 Yrs/Over ATH
274	\$75	2090	Reg 2 ARABIAN PERFORMANCE HALTER GELDING CHAMPIONSHIP – 3 Yrs/Over ATH
275	\$75	1162	Reg 2 HA/AA PERFORMANCE HALTER MARE CHAMPIONSHIP – 3 Yrs/Over ATH
276	\$75	1458	Reg 2 HA/AA PERFORMANCE HALTER GELDING CHAMPIONSHIP – 3 Yrs/Over ATH
277	\$75	2059	Reg 2 ARABIAN PERFORMANCE HALTER STALLION CHAMP – 3 Yrs/Over ATH
278	\$60	919	Reg 2 A/HA/AA SHOWMANSHIP CHAMPIONSHIP - JTH 18 Yrs & Under
279	\$75	1952	Reg 2 ARABIAN WESTERN PLEASURE CHAMPIONSHIP–AATR 19 Yrs/Over
280	\$75	612	Reg 2 HA/AA LADIES SIDE SADDLE CHAMPIONSHIP – ATR
281	\$75	901	Reg 2 A/HA/AA WALK TROT HUNTER/SADDLE SEAT PLEASURE CHAMPIONSHIP – Riders 10/Under
282	\$60	1843	Reg 2 ARABIAN COUNTRY ENGLISH PLEASURE CHAMPIONSHIP - JTR Select
283	\$60	1638	Reg 2 HA/AA HUNTER PLEASURE CHAMPIONSHIP – JOTR 18 Yrs/Under
284	\$75	170	Reg 2 HA/AA WESTERN PLEASURE CHAMPIONSHIP – AATR Select
285	\$60	1178	Reg 2 ARABIAN WESTERN PLEASURE CHAMPIONSHIP - JTR 18 Yrs/Under
286	\$75	84	Reg 2 ARABIAN ENGLISH PLEASURE CHAMPIONSHIP - ATR
287	\$75	172	Reg 2 ARABIAN LADIES SIDE SADDLE - ATR
288	\$75	532	Reg 2 HA/AA ENGLISH PLEASURE CHAMPIONSHIP - Junior Horse 5 Yrs/Under
355	TBA		

SATURDAY AFTERNOON

Classes will not start before 12:00 noon

MAIN ARENA

289	\$75	591	Reg 2 HA/AA MOUNTED NATIVE COSTUME CHAMPIONSHIP
290	\$75	4	Reg 2 ARABIAN MARE BREEDING CHAMPIONSHIP – 2 Yrs/Over AOTH
291	\$75	401	Reg 2 HA/AA MARE BREEDING CHAMPIONSHIP - 2 Yrs/Over
292	\$75	91 *	Reg 2 ARABIAN ENGLISH PLEASURE CHAMPIONSHIP- Junior Horse 5 Yrs/Under
293	\$75	1641	Reg 2 HA/AA COUNTRY ENGLISH PLEASURE CHAMPIONSHIP – AAOTR 55 Yrs/Over
294	\$75	2146	Reg 2 HA/AA ENGLISH PLEASURE CHAMPIONSHIP – ATR
295	\$60	1169	Reg 2 HA/AA WESTERN PLEASURE CHAMPIONSHIP - JOTR 18 Yrs/Under
296	\$75	1852	Reg 2 ARABIAN COUNTRY ENGLISH PLEASURE CHAMPIONSHIP – AATR 19/Over
297	\$60	2957	Reg 2 HA/AA HUNTER PLEASURE CHAMPIONSHIP - JTR 18 Yrs/Under
298	\$75	307	Reg 2 ARABIAN HUNTER PLEASURE CHAMPIONSHIP – AATR 19 Yrs/Over
299	\$75	637 *	Reg 2 HA/AA WESTERN PLEASURE CHAMPIONSHIP - Junior Horse 5 Yrs/Under
300	\$75	1956	Reg 2 ARABIAN WESTERN PLEASURE CHAMPIONSHIP - AOTR SELECT
301	\$60	898	Reg 2 A/HA/AA WALK-JOG WESTERN PLEASURE CHAMPIONSHIP – Riders 10 Yrs/Under
302	\$75	1173	Reg 2 HA/AA HUNTER PLEASURE CHAMPIONSHIP – AATR Select
303	\$75	205 *	Reg 2 ARABIAN WESTERN PLEASURE CHAMPIONSHIP- Junior Horse
304	\$60	2243	Reg 2 ARABIAN HUNTER PLEASURE CHAMPIONSHIP - JTR Select 18 Yrs/Under
305	\$75	3152	Reg 2 HA/AA WESTERN PLEASURE CHAMPIONSHIP – AATR 19 Yrs/Over
306	\$75	1643 *	Reg 2 ARABIAN WESTERN PLEASURE CHAMPIONSHIP - AAOTR 55 Yrs/Over
307	\$75	760	Reg 2 HA/AA ENGLISH SHOW HACK CHAMPIONSHIP – ATR
308	\$75	322	Reg 2 ARABIAN ENGLISH SHOW HACK CHAMPIONSHIP – ATR
356	\$175		TBA

REGION 2 ARABIAN CHAMPIONSHIP SHOW

Tentative Schedule

SATURDAY EVENING **Classes will not start before 6:00 p.m.** **MAIN ARENA**

309	\$75	1079 *	Reg 2 ABS HA/AA YEARLING FILLY SWEEPSTAKES
310	\$75	1075 *	Reg 2 ABS ARABIAN YEARLING COLT/GELDING SWEEPSTAKES
311	\$75	516	Reg 2 HA/AA ENGLISH PLEASURE CHAMPIONSHIP – Open
312	\$75	1641 *	Reg 2 HA/AA COUNTRY ENGLISH PLEASURE CHAMPIONSHIP AAOTR 19 – 54 Yrs
313	\$75	96	Reg 2 ARABIAN COUNTRY ENGLISH PLEASURE CHAMP - OPEN
314	\$75	61	Reg 2 ARABIAN PARK HORSE CHAMPIONSHIP
315	\$75	191	Reg 2 ARABIAN WESTERN PLEASURE CHAMPIONSHIP – Ladies & Gentlemen
316	\$75	2962	Reg 2 HA/AA HUNTER PLEASURE CHAMPIONSHIP – AATR 19 Yrs/Over
317	\$75	621	Reg 2 HA/AA WESTERN PLEASURE CHAMPIONSHIP – Open
318	\$75	505	Reg 2 HA/AA PARK HORSE CHAMPIONSHIP – ATR
319	\$75	291	Reg 2 ARABIAN HUNTER PLEASURE CHAMPIONSHIP – Open
320	\$75	151	Reg 2 ARABIAN MOUNTED NATIVE COSTUME
357	TBA		

THURSDAY **JUNE 20 – 1:00 PM** **MOUNTAIN VIEW ARENA**

321	\$75	2734	Reg 2 VRH ARABIAN RANCH HORSE CONFIRMATION CHAMPIONSHIP – OPEN
322	\$75	2854	Reg 2 VRH HA/AA RANCH HORSE CONFIRMATION CHAMPIONSHIP – OPEN
323	\$75	952	Reg 2 WESTERN HORSEMANSHIP CHAMPIONSHIP - ATR

Short Break

324	\$75	1734	Reg 2 ARABIAN RANCH HORSE RAIL PLEASURE CHAMPIONSHIP – Open
325	\$75	2345	Reg 2 HA/AA RANCH HORSE RAIL PLEASURE CHAMPIONSHIP - Open
326	\$75	1736	Reg 2 ARABIAN RANCH HORSE RAIL PLEASURE CHAMPIONSHIP – ATR
327	\$75	2347	Reg 2 HA/AA RANCH HORSE RAIL PLEASURE CHAMPIONSHIP - ATR

***Break to set poles for Ranch Riding**

328	\$75	3007	Reg 2 ARABIAN RANCH HORSE RIDING CHAMPIONSHIP – Open (Pattern 8)
329	\$75	3027	Reg 2 HA/AA RANCH HORSE RIDING CHAMPIONSHIP – Open (Pattern 8)
330	\$75	3009	Reg 2 ARABIAN RANCH HORSE RIDING CHAMPIONSHIP – ATR (Pattern 6)
331	\$75	3029	Reg 2 HA/AA RANCH HORSE RIDING CHAMPIONSHIP – ATR (Pattern 6)
358	\$175	TBA	

370 \$30 TRAIL HORSE SCHOOLING PRACTICE & WARM-UPS (not judged)

**EACH horse entered in a Trail class will be assessed \$20 per horse per show (walk-trot exempt)*

THURSDAY EVENING 1:00 pm to 6:00 pm EL CAMINO ARENA

El Camino Arena will be OPEN to Trail Horses Only for Schooling Practice

FRIDAY MORNING 7:00 am to 7:45 am EL CAMINO ARENA

El Camino Arena will be OPEN to Trail Horses Only for Schooling & Warming Up

FRIDAY JUNE 21 - 8:00 AM EL CAMINO ARENA

ENGLISH Trail Horse Classes - *Walk Through 7:45 am

332	\$75	180	Reg 2 ARABIAN ENGLISH TRAIL HORSE CHAMPIONSHIP
333	\$75	692	Reg 2 HA/AA ENGLISH TRAIL HORSE CHAMPIONSHIP
334	\$75	184	Reg 2 ARABIAN ENGLISH TRAIL HORSE CHAMPIONSHIP – ATR
335	\$75	696	Reg 2 HA/AA ENGLISH TRAIL HORSE CHAMPIONSHIP- ATR

REGION 2 ARABIAN CHAMPIONSHIP SHOW

Tentative Schedule

WESTERN Trail Horse Classes – TBA Start

EL CAMINO ARENA

*Walk Through - TBA

336	\$75	211	Reg 2 ARABIAN WESTERN TRAIL HORSE CHAMPIONSHIP – Open
337	\$75	217	Reg 2 HA/AA WESTERN TRAIL HORSE CHAMPIONSHIP – Open
338	\$75	217	Reg 2 ARABIAN WESTERN TRAIL HORSE CHAMPIONSHIP – ATR
339	\$75	652	Reg 2 HA/AA WESTERN TRAIL HORSE CHAMPIONSHIP – ATR
340	\$75	214	Reg 2 ARABIAN WESTERN TRAIL HORSE CHAMPIONSHIP- AAOTR 19 Yrs/Over

RESET COURSE & WALK THROUGH

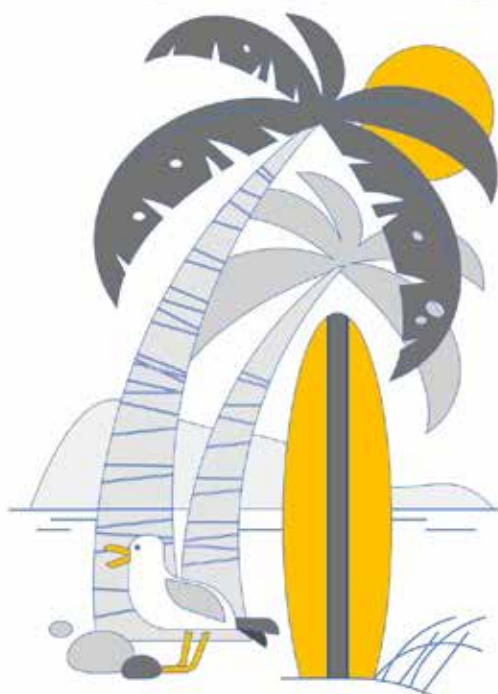
341	\$75	220 *	Reg 2 ARABIAN WESTERN TRAIL CHAMPIONSHIP- Junior Horse 5 Yrs/Under
342	\$75	655	Reg 2 HA/AA WESTERN TRAIL CHAMPIONSHIP – Junior Horse 5 Yrs/Under

RESET COURSE & WALK THROUGH

343	\$60	1027	Reg 2 A/HA/AA WALK/JOG WESTERN TRAIL HORSE CHAMPIONSHIP – 10/Under
-----	------	------	--

RESET COURSE & WALK THROUGH

344	\$75	1779	Reg 2 ARABIAN VRH RANCH TRAIL CHAMPIONSHIP – Open
345	\$75	2353	Reg 2 HA/AA VRH RANCH TRAIL CHAMPIONSHIP – Open
346	\$75	1781	Reg 2 ARABIAN VRH RANCH TRAIL CHAMPIONSHIP – ATR
347	\$75	2363	Reg 2 HA/AA VRH RANCH TRAIL CHAMPIONSHIP – ATR
359	\$175		TBA



Youth Activities

Golden Horseshoe Hunt – daily

50/50 Raffle – daily

Scavenger Hunt – Friday

Pizza Lunch – Friday

Hippology Contest – Saturday

Public Pony Rides/Barn tours – Saturday

details will be posted by show office

ENTRY FEES & INFORMATION

STALL & TACK ROOM FEES (No bedding provided)	each	\$250.00
TRAILER IN/GROUNDS FEE (if no stall requested).....	per horse per day	\$35.00
USEF/DRUG FEE	mandatory per horse	\$23.00
CALIFORNIA DRUG FEE.....	mandatory per horse	\$14.00
RESOLUTION #9-90 FEE (Pre-Show classes).....	mandatory per horse	\$5.00
RESOLUTION #9-90 FEE (Reg 2 Championship Classes	mandatory per horse	\$20.00
AHA RESULTS FEE	mandatory per horse	\$5.00
OFFICE FEE	per horse/per show	\$25.00
PATRONSHIP.....	each	\$650.00
SPONSORSHIPS	per class	\$50.00
*TRAIL HORSE SCHOOLING/WARM UP FEE - mandatory Per Horse	PER SHOW	\$30.00
AHA SINGLE EVENT MEMBERSHIP FEE	per person	\$35.00
(If not a current AHA COMPETITION member, each Owner/Trainer/Rider/Driver/Handler must pay \$35 SEM)		
(Region 2 Championship Show N/A - Each Owner/Trainer/Rider/Handler MUST be AHA COMPETITION member)		
USEF SHOW PASS FEE (Senior or Junior).....	per person	\$45.00
(If not a current USEF member, each Owner/Trainer/Rider/Driver/Handler must pay \$45 Show Pass Fee)		
Must be completed online at USEF.org		
INCOMPLETE ENTRY FEE	per owner not to exceed	\$35.00
RETURNED CHECK OR DENIED CREDIT CARD FEE		\$50.00
Be Advised: If a check is returned or credit card is denied, account MUST be settled prior to start of the show.		
POST ENTRIES (After May 23th)	DOUBLE CLASS FEE	
*USPS postal date will be used to determine fees (Postage meter dates will not be accepted for postmark verification)		

ENTRY CLOSING INFORMATION — ENTRIES CLOSE MAY 24th

- 1) Post Entries will be accepted AFTER May 24th at DOUBLE CLASS FEE
- 2) REGION 2 PRE-SHOW POST ENTRIES will be accepted at the show during the preceding session until the following times: 10:00 a.m. for afternoon session; 3:00 p.m. for evening session; 7:00 p.m. for morning session.
- 3) REGIONAL CHAMPIONSHIP SHOW CLASSES ONLY 6/16-18 - Horses may post enter Regional Championship classes until Thursday, June 20th 12:00 noon at Double Class Fee.
- 4) **PRE-SHOW & CHAMPIONSHIP SHOW RULE – ANY class entry made AFTER close of post entries as stated above; or any class posted into a session that has already begun; or a Ride through the Gate entry in any session; will be charged DOUBLE CLASS FEE PLUS \$35 incomplete fee.**

SHOW OFFICE HOURS - The Show Office will be open Tuesday, June 18th from 9:00 am to 6:00 pm and thereafter on each day of the show from 1 hour before the first scheduled class of the day.

The office will remain open one hour after the completion of the last class of the show.

TBA (To Be Announced) CLASS INFORMATION

In an effort to be exhibitor friendly and provide our exhibitors with classes that are not included in these show schedules, Region 2 is offering TBA classes in both the Pre-Show and the Championship Show – LIMIT ONE PER BARN PER SHOW. There will be FIVE SLOTS offered in the Pre-Show & SEVEN SLOTS offered in the Championship Show on a first come, first served basis.

When all TBA slots are filled, under NO CIRCUMSTANCES will any more classes be added to either show. ANY CLASS ON THE AHA CLASS LIST or that is recognized by AHA can be considered for a TBA class except for Dressage, Sport Horse, Cutting, Working Cow & Reined Cow. (See www.arabianhorses.org for list) Once the class has been activated, exhibitors will be notified, and a list will be posted at the show office. At that time, all exhibitors will have the opportunity to enter an activated class at the TBA class fee (Pre-Show \$100 TBA Class Entry Fee / Championship Show \$175 TBA Class Entry Fee). If TBA added class is a Sweepstakes allocated class, be advised that the class will not receive Sweepstakes' payout.

TO ACTIVATE A TBA CLASS: 1) NAME A CLASS; and 2) ENTER CLASS BY PAYING THE TOTAL TBA CLASS FEE

Pre-Show TBA class fee: \$100 + \$75 TBA Sponsorship Fee = \$175 Total

Championship Show TBA class fee: \$175 + \$125 TBA Sponsorship Fee = \$300 Total

ENTRY PROCESS DETAILS & INFORMATION

- ENTRY FORM CONSIST OF TWO PAGES – The Entry form is double sided and requires signatures on the back side AND a second page - the USEF Waiver & Release of Liability Form which requires signatures. Entries MUST be submitted on the Official Entry Form for this show. If additional forms are needed, please make copies of all forms. ONE OWNER per form and ONE HORSE per form. NO HORSE may be entered on more than one Form. Owners that have horses with several different trainers will be required to pay office fee per horse per trainer.
- Every Owner, Exhibitor, Trainer & Rider/Driver/Handler, or his/her agent(s) MUST SIGN the 1) BACK SIDE OF THE ENTRY FORM, and 2) USEF WAIVER & RELEASE OF LIABILITY form. If a Rider/Driver/Handler is under 18, his/her parent or guardian, or if not available, the trainer must sign the entry blank on minor's behalf (Junior Owners are not eligible to sign).
- Farm name may be used if the stable or farm is the bona fide owner appearing on the horse's registration papers. The owner must have an AHA Business membership and that owner AHA number must be used. The owner must have a USEF Farm ID# or Farm Recording Certificate and one of the owners must be a current USEF member. Copies of AHA Business membership card, USEF Farm ID# or Certificate must be submitted with the entry.
- Horses entered in AMATEUR OWNER and JUNIOR OWNER classes must be registered in the name of competitor or member of competitor's family.
- *TWO DISTINCT NON-FAMILY OWNERS' MAY CO-OWN AND SHOW A HORSE IN AAOTR, AOTR or JOTR classes except that no family member or a professional may enter into this relationship. Non-family is defined as two distinct individuals who are not related as family. Horse must be registered as an "AND" ownership relationship, not "OR". Both co- owners of horse must have current USEF Amateur memberships. No Farm or Corporation co-owned horses are eligible (see USEF AR110 4e)
- USEF SAFE SPORT REQUIREMENT – If you are 18 years of age or older, you are required to complete the core Safe Sport Training within 30 days of activating your membership. If you do not complete the training, you are ineligible to participate in all USEF activities including competitions. Go to USEF.org - log into your member dashboard and TAKE the SAFE SPORT TRAINING. Please include a copy of current USEF membership card with Safe Sport Training completion dates or send a copy of your Certificate of Completion of Safe Sport Training with your entries.
- USEF MEMBER REMINDER - All USEF Life and Senior Active members, as well as participants who have regular contact with minor athletes, are required to comply with the U.S. Center for SafeSport training requirement to be eligible to participate in the competition. All participants must adhere to the U.S. Center for SafeSport Code, USEF Safe Sport Policy, and the Minor Athlete Abuse Prevention Policies. More information about these can be found at www.usef.org
- PAYMENT must accompany entry form via a valid CHECK, MONEY ORDER or CREDIT CARD for total entry fees, stall, tack, and all other applicable fees. Post-dated checks will not be accepted. Open checks will be closed for the amount due at the time entries are processed. No check will be held until show time. If paying by credit card, Complete credit card information must be provided in the box located on the bottom of the entry form. Entries received without check, money order or credit card information will not be processed until payment is received and will be subject to post entry penalties when payment becomes valid. *If a check is post-dated, received late, returned or your credit card is denied, your entries may be adjusted to include any applicable class entry penalties.
- INCOMPLETE ENTRY FEE (not to exceed \$35) may be assessed on any entry received that is illegible, incomplete, or incorrect. All required information must be clear, easily read, and correct. An entry will be considered incomplete if there are missing copies of registration papers, missing copies of AHA and/or USEF cards for trainers, owners, rider, or handlers, missing signatures, missing or incorrect payment for entries, missing or incomplete forms, etc.

Entries will only be considered complete if the following are fulfilled when entering:

- A. All Membership cards must be current. No need to send copies
- B. Registration Transfers must be complete. No need to send copies of Registration papers.
- C. Completed Entry form including signed Waivers.
- D. Check OR credit card for Total Entry—NO BLANK CHECKS ACCEPTED!

THERE WILL BE AN ADDITIONAL \$35.00 CHARGE FOR EACH INCOMPLETE ENTRY. Entries lacking any of the above mentioned, will be considered incomplete and may be returned. Exhibitor packets will not be given to exhibitors until entry is complete. All entries must be accompanied by a valid check or credit card for the full amount.

ENTRIES CLOSE MAY 24th

SHOW ENTRY INFORMATION

USEF SHOW PASS FORM – This form must be done online with USEF. As of 12/1/2022, only one Show Pass Form is allowed per competition year. If you have already submitted a Show Pass Form for the year, a competing membership is required. Please Note: Competing membership is required for Trainers/Coaches, and this includes parents signing as trainers.

PHOTOGRAPHER: Show management has contracted with a professional photography company to provide Official show photography services. Photographs will be taken of exhibitors/horses in each class and made available for purchase on the Official Photographer's website. No other person/company may photograph, sell, or give away images taken anywhere on the show grounds without prior written consent from the Official Photographer. Persons may, however, photograph family members and their own horses. Contact the Official Photographer with any special requests.

AWARDS AND RIBBONS

REGULAR CLASSES -- Award to 1st, ribbons thru sixth place

AHA MEDAL CLASSES -- Medal to 1st, ribbons thru sixth place

JUNIOR EXHIBITOR CLASSES -- Award to 1st, ribbons thru sixth place

TBA CLASSES – same awards at Regular Classes

AWARDS & RIBBONS

CHAMPIONSHIP CLASSES -- Champion: Award & Garland; Reserve Champion: Garland; Top Five Ribbons to remainder

BREEDERS SWEEPSTAKES YEARLING CLASSES – Champion: Award and Ribbon; Reserve Champion: Ribbon; and Ribbons to Top Ten

TBA CLASSES – same awards as Championship Classes

AWARDS OFFICE - REGION 2 CHAMPIONSHIP SHOW - The Region 2 Awards Office is located outside the Main Arena between the "IN" and "OUT" gates. The Awards Office is open during Championship Show classes. Bring your back number of the class won to the Awards Office to pick out your prize.

RESOLUTION 9-90 FEE - Every horse competing in the Region 2 Pre-Show MUST pay \$5.00 PER HORSE (mandatory) to fund the Education & Evaluation program for AHA judges & stewards.

AHA MEMBERSHIP – AHA Competition current membership is REQUIRED to participate in Regional Show.

BREEDING/IN-HAND HALTER CLASSES - COMPARATIVE JUDGING and IN THE RING PROCEDURE will be used in ALL Breeding & Gelding In-Hand Regional Championship classes. The final placing for Champion, Reserve Champion and Top Five will be determined by the Majority Opinion System (MOS). Horses shall enter the arena in a Posted Order by BIRTH DATE, oldest to youngest.

PERFORMANCE HALTER CLASSES – All Performance Halter Regional classes will be judged using the Arabian Performance Halter Score Card. At Regional Championship utilizing a three-judge panel, the scorecards will be turned into placings & in turn, run through the Majority Opinion System (MOS) to determine the Champion, Reserve Champion and Top Five.

REGIONAL AWARD CONDITIONS - A Champion and Reserve Champion plus three additional unranked awards shall be made in each Regional Class to make a Top Five. Region 2 Championship Show will give a FULL TOP FIVE awards to each class regardless of how many entries are competing at the close of the gate. However, only awards made to the top 50% of the class (rounded up and not to exceed 5 awards) will receive Arabian Breeders Sweepstakes payout, AHA Horse Achievement Award, Amateur Achievement Awards, High Point Horse Achievement Award, High Point Amateur Achievement Award and Distance Award Points.

RESOLUTION 9-90 FEE - Every horse competing in the Region 2 Championship Show MUST pay \$20.00 per horse. This mandatory fee will fund Education & Evaluation programs for AHA judges & stewards.

SWEEPSTAKES CLASSES - Arabian Breeders Sweepstakes Allocated prize money is available for horses properly entered in the Sweepstakes program at the time of competing in said class. See additional information in this book. All Breeders Sweepstakes prize money will be mailed directly from AHA.

****NEW 2022 QUALIFICATION INFORMATION**** See the AHA Handbook for the current qualification information.

COMMERCIAL VENDOR INFORMATION

10' X 10' Booth ---\$150.00

10' X 20' Booth --- \$175.00

Trailer Space \$225.00

Contact Joyce Schroeder (805) 432-6890 or joyce18089@sbcglobal.net for Reservations and more information

SHOW INFORMATION

STABLING INFORMATION - The Stable Area of the Earl Warren Show Grounds will be open to exhibitors SUNDAY, June 11th through SUNDAY JUNE 18th. Exhibitors are to vacate the show grounds by noon on June 18th. Stabling will be allocated based on horses entered in the show by the Close of Entries – MAY 24th. Assignments of stalls are entirely at the prerogative of the Show Management. Horses must be placed in stalls assigned and no changes will be permitted without the express consent of the Barn Manager. Stalls for post entered horses may be subject to availability. All permanent box stalls are 12 X12' & either have a full door or doors with split top & bottom door. *BE ADVISED: Regarding stall requests for horses entered after May 23th or post entered late and requesting stabling with other horses entered previously, original stalling assignments will not be changed to accommodate the late entry. Management will try to stable late entries as close as possible to other entries, but no guarantees can be made. Show management's decision is final. Charges from Earl Warren billed to Region 2 Show for removal of lumber or other items used for decorating purposes will be billed back to the exhibitor after the conclusion of the show. A \$50 clean up fee/stall will be charged for stalls with trash left behind.

BE ADVISED – There are 440 stalls available on the Earl Warren Show Grounds. Portable stalls may be available. It may be necessary to limit tack rooms and/or groom rooms. **SUBMIT YOUR ENTRIES EARLY.** Assignment of stalls will be made as fairly as possible on the basis of many considerations, including TIME/DATE of receipt of entries, show support, number of horses, ring use, etc. Contact the barn manager for additional information.

BARN MANAGER

BARN MANAGER Ken West (559) 250-2124

westarabians@netscape.net

HORSES ARE TO BE RINSED AND BATHED IN THE WASH RACKS ONLY
NOT IN THE BARN AISLE - Santa Barbara is STILL in a draught

NO SMOKING OR ALCOHOL IS ALLOWED IN THE BARN

This is an Earl Warren Show Grounds facility & California State Law

All fines will be passed onto Trainer/Exhibitors

Any parties serving alcohol must go through Earl Warren Showgrounds (805)687-0766

EARLY ARRIVALS & LATE DEPARTURES - Anyone wishing to arrive early or depart late must make arrangements with the Barn Manager at least **2 WEEKS IN ADVANCE**. Early arrivals and/or late departures will be charged \$50 per horse stall and/or tack room per day. Without notification, the fee will be \$100.00 per horse stall and/or tack room per day. This charge follows Earl Warren Show Grounds contract. All money collected goes to the 19th Agricultural District of State of California. Neither Region 2 nor the horse show has any control over the amounts charged nor do we recognize any income from the fees.

FEED & BEDDING – Region 2 will NOT provide first bedding for stalls. Call LA CUMBRE FEED (805) 687-1880 – ask for Nancy for shavings, hay, and grain. Arrangements have been made for shavings and the best quality feed available at regular competitive prices to be delivered LA CUMBRE FEED (805) 687-1880. The Barn Manager will provide exhibitors with instructions concerning disposal of bedding from stalls & handling of feed in stalls and alleys. Manure must be placed in designated areas.

TRAILERING IN/GROUNDS FEE - Exhibitors showing from trailers will be assigned a designated parking area and will be charged a grounds fee of \$35.00 PER HORSE PER DAY, to be remitted with entry fees. Every horse entered in this show, except for nursing foals stabled with their dams, must pay a stall fee or a trailer in/grounds fee. The Barn Manager will be on the grounds throughout the Show.

LA CUMBRE FEED

for Shavings, Hay and Grain for Region 2 Show

(805) 687-1880 (Ask for Nancy)

**They close at noon on Saturday and are closed on Sundays.
Place your orders in a timely fashion for delivery.**

CLASSES SORTED BY DIVISIONS

The Class Schedule, numbers and fees listed on pages 5 - 12 supersedes any information listed under Classes by Divisions

BREEDING/IN-HAND

ARABIAN

1	\$50	ARABIAN MARES – 2 Yrs/Over Open
22	\$50	ARABIAN GELDINGS – 2 Yrs/Over Open
61	\$50	ARABIAN PERFORMANCE HALTER MARES – 3 Yrs/Over ATH
63	\$50	ARABIAN PERFORMANCE HALTER GELDINGS – 3 Yrs/Over ATH
64	\$50	ARABIAN PERFORMANCE HALTER STALLIONS – 3 Yrs/Over ATH
42	\$50	ARABIAN STALLION BREEDING – 2 Yrs/Over Open
203	\$75	Reg 2 ARABIAN GELDING IN-HAND CHAMPIONSHIP – 2 Years & Over
222	\$75	Reg 2 ARABIAN GELDING IN-HAND CHAMPIONSHIP - 2 Yrs/Over AOTH
257	\$75	Reg 2 ARABIAN MARE BREEDING CHAMPIONSHIP - 3 Years & Over
258	\$75	Reg 2 ARABIAN MARE BREEDING CHAMPIONSHIP - 2 Years Old
259	\$75	Reg 2 ABS ARABIAN YEARLING FILLY SWEEPSTAKES
260	\$75	Reg 2 ARABIAN STALLION BREEDING CHAMPIONSHIP – 3 Years & Over
261	\$75	Reg 2 ARABIAN STALLION BREEDING CHAMPIONSHIP – 2 Years Old
290	\$75	Reg 2 ARABIAN MARE BREEDING CHAMPIONSHIP – 2 Yrs/Over AOTH
310	\$75	Reg 2 ABS ARABIAN YEARLING COLT/GELDING SWEEPSTAKES
273	\$75	Reg 2 ARABIAN PERFORMANCE HALTER MARE CHAMPIONSHIP – 3 Yrs/Over ATH
274	\$75	Reg 2 ARABIAN PERFORMANCE HALTER GELDING CHAMPIONSHIP – 3 Yrs/Over ATH
277	\$75	Reg 2 ARABIAN PERFORMANCE HALTER STALLION CHAMP – 3 Yrs/Over ATH

HA/AA

2	\$50	HA/AA MARES – 2 Yrs/Over Open
21	\$50	HA/AA GELDINGS – 2 Yrs/Over Open
60	\$50	HA/AA PERFORMANCE HALTER MARES – 3 Yrs/Over ATH
62	\$50	HA/AA PERFORMANCE HALTER GELDINGS – 3 Yrs/Over ATH
202	\$75	Reg 2 HA/AA GELDING IN-HAND CHAMPIONSHIP – 2 Yrs/Over AOTH
223	\$75	Reg 2 ABS HA/AA YEARLING COLT/GELDING SWEEPSTAKES
238	\$75	Reg 2 HA/AA MARE BREEDING CHAMPIONSHIP – 2 Yrs/Over AOTH
239	\$75	Reg 2 HA/AA GELDING IN-HAND CHAMPIONSHIP - 2 Yrs/Over
291	\$75	Reg 2 HA/AA MARE BREEDING CHAMPIONSHIP - 2 Yrs/Over
309	\$75	Reg 2 ABS HA/AA YEARLING FILLY SWEEPSTAKES
275	\$75	Reg 2 HA/AA PERFORMANCE HALTER MARE CHAMPIONSHIP – 3 Yrs/Over ATH
276	\$75	Reg 2 HA/AA PERFORMANCE HALTER GELDING CHAMPIONSHIP – 3 Yrs/Over ATH

ARABIAN/HA/AA PLEASURE DRIVING

201	\$75	Reg 2 ARABIAN PLEASURE DRIVING CHAMPIONSHIP
256	\$75	Reg 2 HA/AA PLEASURE DRIVING CHAMPIONSHIP

ARABIAN/HA/AA COUNTRY PLEASURE DRIVING

20	\$50	ARABIAN COUNTRY PLEASURE DRIVING -- Open
41	\$50	HA/AA COUNTRY PLEASURE DRIVING – Open
221	\$75	Reg 2 HA/AA COUNTRY PLEASURE DRIVING CHAMPIONSHIP

ARABIAN/HA/AA LADIES SIDESADDLE

18	\$50	ARABIAN LADIES SIDE SADDLE – Open
204	\$75	Reg 2 ARABIAN LADIES SIDE SADDLE CHAMPIONSHIP
287	\$75	Reg 2 ARABIAN LADIES SIDE SADDLE - ATR
47	\$50	HA/AA LADIES SIDE SADDLE
240	\$75	Reg 2 HA/AA LADIES SIDE SADDLE CHAMPIONSHIP
280	\$75	Reg 2 HA/AA LADIES SIDE SADDLE CHAMPIONSHIP – ATR

CLASSES SORTED BY DIVISIONS

The Class Schedule, numbers and fees listed on pages 5 - 12 supersedes any information listed under Classes by Divisions

ARABIAN/HA/AA ENGLISH SHOW HACK

4	\$50	ARABIAN ENGLISH SHOW HACK – Open
205	\$75	Reg 2 ARABIAN ENGLISH SHOW HACK CHAMPIONSHIP – Open
308	\$75	Reg 2 ARABIAN ENGLISH SHOW HACK CHAMPIONSHIP – ATR
25	\$50	HA/AA ENGLISH SHOW HACK – Open
75	\$50	HA/AA ENGLISH SHOW HACK - ATR
220	\$60	Reg 2 HA/AA ENGLISH SHOW HACK JTR
224	\$75	Reg 2 HA/AA ENGLISH SHOW HACK CHAMPIONSHIP – Open
307	\$75	Reg 2 HA/AA ENGLISH SHOW HACK CHAMPIONSHIP – ATR

ARABIAN/HA/AA ENGLISH PLEASURE

14	\$50	ARABIAN ENGLISH PLEASURE – Open
50	\$50	ARABIAN ENGLISH PLEASURE – ATR
67	\$50	ARABIAN ENGLISH PLEASURE – Junior Horse 5 Yrs/Under
210	\$75	Reg 2 ARABIAN ENGLISH PLEASURE CHAMPIONSHIP – AAOTR 19 Yrs/Over
241	\$75	Reg 2 ARABIAN ENGLISH PLEASURE CHAMPIONSHIP – Open
254	\$60	Reg 2 ARABIAN ENGLISH PLEASURE CHAMPIONSHIP – JTR 18 Yrs/Under
286	\$75	Reg 2 ARABIAN ENGLISH PLEASURE CHAMPIONSHIP - ATR
292	\$75	Reg 2 ARABIAN ENGLISH PLEASURE CHAMPIONSHIP- Junior Horse 5 Yrs/Under
30	\$50	HA/AA ENGLISH PLEASURE – ATR
57	\$50	HA/AA ENGLISH PLEASURE – Open
73	\$50	HA/AA ENGLISH PLEASURE – Junior Horse 5 Yrs/Under
214	\$60	Reg 2 HA/AA ENGLISH PLEASURE CHAMPIONSHIP – JTR 18 Yrs/Under
217	\$75	Reg 2 HA/AA ENGLISH PLEASURE CHAMPIONSHIP - AAOTR 19 Yrs/Over
288	\$75	Reg 2 HA/AA ENGLISH PLEASURE CHAMPIONSHIP - Junior Horse 5 Yrs/Under
294	\$75	Reg 2 HA/AA ENGLISH PLEASURE CHAMPIONSHIP – ATR
311	\$75	Reg 2 HA/AA ENGLISH PLEASURE CHAMPIONSHIP – Open

ARABIAN/HA/AA PARK HORSE

55	\$50	ARABIAN PARK HORSE – Open
270	\$75	Reg 2 ARABIAN PARK HORSE CHAMPIONSHIP – ATR
314	\$75	Reg 2 ARABIAN PARK HORSE CHAMPIONSHIP
49	\$50	HA/AA PARK HORSE – Open
269	\$75	Reg 2 HA/AA PARK HORSE CHAMPIONSHIP
318	\$75	Reg 2 HA/AA PARK HORSE CHAMPIONSHIP – ATR

ARABIAN/HA/AA MOUNTED NATIVE COSTUME

43	\$50	ARABIAN MOUNTED NATIVE COSTUME – Open
262	\$75	Reg 2 ARABIAN MOUNTED NATIVE COSTUME CHAMPIONSHIP – ATR
320	\$75	Reg 2 ARABIAN MOUNTED NATIVE COSTUME
53	\$50	HA/AA MOUNTED NATIVE COSTUME – Open
272	\$75	Reg 2 HA/AA MOUNTED NATIVE COSTUME CHAMPIONSHIP – ATR
289	\$75	Reg 2 HA/AA MOUNTED NATIVE COSTUME CHAMPIONSHIP

CLASSES SORTED BY DIVISIONS

The Class Schedule, numbers and fees listed on pages 5 - 12 supersedes any information listed under Classes by Divisions

ARABIAN/HA/AA WESTERN PLEASURE

12	\$50	ARABIAN WESTERN PLEASURE - Junior Horse
34	\$50	ARABIAN WESTERN PLEASURE – Ladies & Gentlemen to Ride
40	\$50	ARABIAN WESTERN PLEASURE – ATR Select
48	\$50	ARABIAN WESTERN PLEASURE – AATR 19 Yrs/Over
65	\$40	ARABIAN WESTERN PLEASURE - JTR 18 Yrs/Under
72	\$50	ARABIAN WESTERN PLEASURE – Open
207	\$60	Reg 2 ARABIAN WESTERN PLEASURE CHAMPIONSHIP – JTR Select 18 Yrs/Under Select 18 Yrs/Under
215	\$75	Reg 2 ARABIAN WESTERN PLEASURE CHAMPIONSHIP- AAOTR 19-54 Yrs
245	\$75	Reg 2 ARABIAN WESTERN PLEASURE CHAMPIONSHIP – AATR Select
250	\$60	Reg 2 ARABIAN WESTERN PLEASURE CHAMPIONSHIP - JOTR 18 Yrs/Under
255	\$75	Reg 2 ARABIAN WESTERN PLEASURE JUNIOR HORSE CHAMPIONSHIP MARES, GELDINGS & STALLIONS
271	\$75	Reg 2 ARABIAN WESTERN PLEASURE CHAMPIONSHIP – Open
279	\$75	Reg 2 ARABIAN WESTERN PLEASURE CHAMPIONSHIP–AATR 19 Yrs/Over
285	\$60	Reg 2 ARABIAN WESTERN PLEASURE CHAMPIONSHIP - JTR 18 Yrs/Under
300	\$75	Reg 2 ARABIAN WESTERN PLEASURE CHAMPIONSHIP - AOTR SELECT
303	\$75	Reg 2 ARABIAN WESTERN PLEASURE CHAMPIONSHIP- Junior Horse
306	\$75	Reg 2 ARABIAN WESTERN PLEASURE CHAMPIONSHIP - AAOTR 55 Yrs/Over
315	\$75	Reg 2 ARABIAN WESTERN PLEASURE CHAMPIONSHIP – Ladies & Gentlemen
10	\$50	HA/AA WESTERN PLEASURE – Ladies & Gentlemen to Ride
15	\$50	HA/AA WESTERN PLEASURE – AAOTR 19 Yrs/Over
27	\$50	HA/AA WESTERN PLEASURE - Junior Horse 5 Yrs/Under
32	\$50	HA/AA WESTERN PLEASURE – ATR Select
51	\$50	HA/AA WESTERN PLEASURE – Open
56	\$50	HA/AA WESTERN PLEASURE – AATR 19 Years/Over
69	\$40	HA/AA WESTERN PLEASURE – JTR 18 Yrs/Under
226	\$60	Reg 2 HA/AA WESTERN PLEASURE CHAMPIONSHIP – JTR Select 18 Yrs/Under
236	\$75	Reg 2 HA/AA WESTERN PLEASURE CHAMPIONSHIP - Ladies & Gentlemen to Ride
244	\$60	Reg 2 HA/AA WESTERN PLEASURE CHAMPIONSHIP - JTR 18 Yrs/Under
249	\$75	Reg 2 HA/AA WESTERN PLEASURE CHAMPIONSHIP - AAOTR 19-54 Yrs
266	\$75	Reg 2 HA/AA WESTERN PLEASURE CHAMPIONSHIP – AAOTR 55 Yrs/Over
284	\$75	Reg 2 HA/AA WESTERN PLEASURE CHAMPIONSHIP – AATR Select
295	\$60	Reg 2 HA/AA WESTERN PLEASURE CHAMPIONSHIP - JOTR 18 Yrs/Under
299	\$75	Reg 2 HA/AA WESTERN PLEASURE CHAMPIONSHIP - Junior Horse 5 Yrs/Under
305	\$75	Reg 2 HA/AA WESTERN PLEASURE CHAMPIONSHIP – AATR 19 Yrs/Over
317	\$75	Reg 2 HA/AA WESTERN PLEASURE CHAMPIONSHIP – Open

EQUITATION/SHOWMANSHIP

3	\$50	SHOWMANSHIP - JTH 18 Yrs/Under
278	\$60	Reg 2 A/HA/AA SHOWMANSHIP CHAMPIONSHIP - JTH 18 Yrs & Under
5	\$40	SADDLE SEAT EQUITATION – JTR 18 Yrs/Under
7	\$40	AHA SADDLE SEAT EQUITATION MEDAL CLASS – JTR 18 Yrs/Under
228	\$60	Reg 2 SADDLE SEAT EQUITATION CHAMPIONSHIP - JTR 18 Yrs/Under
17	\$40	HUNTER SEAT EQUITATION NOT TO JUMP – JTR 18 Yrs/Under
19	\$40	AHA HUNTER SEAT EQUITATION MEDAL NOT TO JUMP CLASS – JTR 18 Yrs/Under
218	\$60	Reg 2 HUNTER SEAT EQUITATION NOT TO JUMP CHAMPIONSHIP- JTR 18 Yrs/Under
76A	\$50	A/HA/AA HUNTER SEAT EQUITATION AATR
236A	\$75	Reg 2 A/HA/AA HUNTER SEAT EQUITATION AATR
102	\$50	WESTERN HORSEMANSHIP - ATR
103	\$50	AHA WESTERN HORSEMANSHIP JTR Medal Class
323	\$75	Reg 2 WESTERN HORSEMANSHIP CHAMPIONSHIP - ATR

CLASSES SORTED BY DIVISIONS

The Class Schedule, numbers and fees listed on pages 5 - 12supersedes any information listed under Classes by Divisions

ARABIAN/HA/AA COUNTRY ENGLISH PLEASURE

8	\$50	ARABIAN COUNTRY ENGLISH PL – Junior Horse 5 Yrs/Under
24	\$50	ARABIAN COUNTRY ENGLISH PLEASURE – AAOTR 19/Over
31	\$40	ARABIAN COUNTRY ENGLISH PLEASURE – JTR 18 Yrs/Under
45	\$50	ARABIAN COUNTRY ENGLISH PLEASURE – Open
52	\$50	ARABIAN COUNTRY ENGLISH PLEASURE – AATR 19 Yrs/Over
74	\$50	ARABIAN COUNTRY ENGLISH PLEASURE – ATR Select
209	\$60	Reg 2 ARABIAN COUNTRY ENGLISH PLEASURE CHAMPIONSHIP - JTR 18 Yrs/Under
225	\$75	Reg 2 ARABIAN COUNTRY ENGLISH PLEASURE CHAMPIONSHIP- AAOTR 19-54 Yrs
229	\$75	Reg 2 ARABIAN COUNTRY ENGLISH PLEASURE CHAMPIONSHIP - Junior Horse 5/Under
235	\$75	Reg 2 ARABIAN COUNTRY ENGLISH PLEASURE CHAMPIONSHIP- AAOTR 55 Yrs/Over
237	\$75	Reg 2 ARABIAN COUNTRY PLEASURE DRIVING CHAMPIONSHIP
246	\$60	Reg 2 ARABIAN COUNTRY ENGLISH PLEASURE CHAMPIONSHIP - JOTR 18 Yrs/Under
252	\$75	Reg 2 ARABIAN COUNTRY ENGLISH PLEASURE CHAMPIONSHIP – AATR Select
265	\$75	Reg 2 ARABIAN COUNTRY ENGLISH PLEASURE CH – Ladies & Gentlemen to Ride
282	\$60	Reg 2 ARABIAN COUNTRY ENGLISH PLEASURE CHAMPIONSHIP - JTR Select
296	\$75	Reg 2 ARABIAN COUNTRY ENGLISH PLEASURE CHAMPIONSHIP – AATR 19/Over
313	\$75	Reg 2 ARABIAN COUNTRY ENGLISH PLEASURE CHAMP - OPEN
23	\$50	HA/AA COUNTRY ENGLISH PLEASURE – Junior Horse 5/Und
13	\$50	HA/AA COUNTRY ENGLISH PLEASURE – ATR Select
36	\$40	HA/AA COUNTRY ENGLISH PLEASURE - JTR 18 Yrs/Under
44	\$50	HA/AA COUNTRY ENGLISH PLEASURE – AATR 19 Yrs/Over
70	\$50	HA/AA COUNTRY ENGLISH PLEASURE - Open
211	\$75	Reg 2 HA/AA COUNTRY ENGLISH PLEASURE CHAMPIONSHIP–AATR 19 Yrs/Over
216	\$60	Reg 2 HA/AA COUNTRY ENGLISH PLEASURE CHAMPIONSHIP – JTR 18 Yrs/Under
232	\$75	Reg 2 HA/AA COUNTRY ENGLISH PLEASURE CHAMPIONSHIP – ATR Select
242	\$60	Reg 2 HA/AA COUNTRY ENGLISH PLEASURE CHAMPIONSHIP – JOTR 18/Under
251	\$75	Reg 2 HA/AA COUNTRY ENGLISH PLEASURE CHAMPIONSHIP - Junior Horse 5 & Under
263	\$75	Reg 2 HA/AA COUNTRY ENGLISH PLEASURE CHAMP – Open
293	\$75	Reg 2 HA/AA COUNTRY ENGLISH PLEASURE CHAMPIONSHIP – AAOTR 55 Yrs/Over
312	\$75	Reg 2 HA/AA COUNTRY ENGLISH PLEASURE CHAMPIONSHIP AAOTR 19 – 54 Yrs

ARABIAN/HA/AA WALK/TROT

9	\$40	A/HA/AA WALK-TROT HUNTER/COUNTRY ENGLISH/ENGLISH PLEASURE - Riders 10/Under
66	\$40	A/HA/AA WALK-TROT HUNTER SEAT/SADDLE SEAT EQUITATION –10/Under
234	\$60	Reg 2 A/HA/AA WALK-TROT HUNTER/SADDLE SEAT EQUITATION CHAMPIONSHIP - 10 Yrs/Under
208	\$60	Reg 2 A/HA/AA WALK-TROT SADDLE SEAT EQUITATION CHAMPIONSHIP- 10Yrs/Under
231	\$60	Reg 2 A/HA/AA WALK TROT COUNTRY ENGLISH/ENGLISH PLEASURE CHAMP-10/Under
281	\$75	Reg 2 A/HA/AA WALK TROT HUNTER/SADDLE SEAT PLEASURE CHAMPIONSHIP – Riders 10/Under
26	\$40	A/HA/AA WALK-JOG WESTERN PLEASURE – Riders 10
37	\$50	A/HA/AA WALK-JOG WESTERN SEAT EQUITATION – Riders 10 Yrs/Under
247	\$75	Reg 2 A/HA/AA WALK TROT WESTERN SEAT EQUITATION CHAMPIONSHIP–10/Under
301	\$60	Reg 2 A/HA/AA WALK-JOG WESTERN PLEASURE CHAMPIONSHIP – Riders 10 Yrs/Under
87	\$40	A/HA/AA WESTERN WALK/JOG TRAIL HORSE - 10/Under
343	\$75	Reg 2 A/HA/AA WALK/JOG WESTERN TRAIL HORSE CHAMPIONSHIP – 10/Under

MISC CLASSES

206		LEADLINE
350	\$100	PRO/AM PLEASURE CLASS
		Fun class 50% exhibitor 50% to Region 2 Youth Judging team
		Pairs performance class, all disciplines.
		In costume, open to anyone, amateur or trainers or grooms or parents.

CLASSES SORTED BY DIVISIONS

The Class Schedule, numbers and fees listed on pages 5 - 12 supersedes any information listed under Classes by Divisions

ARABIAN/HA/AA HUNTER PLEASURE

11	\$50	ARABIAN HUNTER PLEASURE – ATR Select
16	\$50	ARABIAN HUNTER PLEASURE - Jr. Horse
29	\$50	ARABIAN HUNTER PLEASURE – Ladies & Gentlemen to Ride
33	\$40	ARABIAN HUNTER PLEASURE – JTR 18 Yrs/Under
38	\$50	ARABIAN HUNTER PLEASURE – AATR 19 Yrs/Over
58	\$50	ARABIAN HUNTER PLEASURE – Open
68	\$50	ARABIAN HUNTER PLEASURE - Limit Horse
71	\$50	ARABIAN HUNTER PLEASURE - AAOTR 19 Yrs/Over
212	\$60	Reg 2 ARABIAN HUNTER PLEASURE CHAMPIONSHIP - JOTR 18 Yrs/Under
219	\$75	Reg 2 ARABIAN HUNTER PLEASURE CHAMPIONSHIP – AATR Select
230	\$60	Reg 2 ARABIAN HUNTER PLEASURE CHAMPIONSHIP - JTR 18 Yrs/Under
243	\$75	Reg 2 ARABIAN HUNTER PLEASURE CHAMPIONSHIP - AAOTR 55 Yrs/Over
253	\$75	Reg 2 ARABIAN HUNTER PLEASURE CHAMPIONSHIP - Junior Horse 5 Yrs/Under
264	\$75	Reg 2 ARABIAN HUNTER PLEASURE CHAMPIONSHIP – Ladies & Gentlemen
268	\$75	Reg 2 ARABIAN HUNTER PLEASURE CHAMPIONSHIP - AAOTR 19-54 Yrs
298	\$75	Reg 2 ARABIAN HUNTER PLEASURE CHAMPIONSHIP – AATR 19 Yrs/Over
304	\$60	Reg 2 ARABIAN HUNTER PLEASURE CHAMPIONSHIP - JTR Select 18 Yrs/Under
319	\$75	Reg 2 ARABIAN HUNTER PLEASURE CHAMPIONSHIP – Open
6	\$50	HA/AA HUNTER PLEASURE – Ladies & Gentlemen to Ride
28	\$50	HA/AA HUNTER PLEASURE – AAOTR 19 Yrs & Over
35	\$50	HA/AA HUNTER PLEASURE – ATR Select
39	\$50	HA/AA HUNTER PLEASURE – Junior Horse 5 Yrs/Under
46	\$40	HA/AA HUNTER PLEASURE – JTR 18 Yrs/Under
54	\$50	HA/AA HUNTER PLEASURE – AATR 19 Yrs/Over
59	\$50	HA/AA HUNTER PLEASURE – Open
213	\$75	Reg 2 HA/AA HUNTER PLEASURE CHAMPIONSHIP - AAOTR 55 Yrs/Over
227	\$75	Reg 2 HA/AA HUNTER PLEASURE CHAMPIONSHIP - AAOTR 19-54 Yrs
233	\$75	Reg 2 HA/AA HUNTER PLEASURE CHAMPIONSHIP - Junior Horse 5 Yrs/Under
248	\$60	Reg 2 HA/AA HUNTER PLEASURE CHAMPIONSHIP – JTR Select 18 Yrs/Under
267	\$75	Reg 2 HA/AA HUNTER PLEASURE CHAMPIONSHIP – Open
283	\$60	Reg 2 HA/AA HUNTER PLEASURE CHAMPIONSHIP – JOTR 18 Yrs/Under
297	\$60	Reg 2 HA/AA HUNTER PLEASURE CHAMPIONSHIP - JTR 18 Yrs/Under
302	\$75	Reg 2 HA/AA HUNTER PLEASURE CHAMPIONSHIP – AATR Select
316	\$75	Reg 2 HA/AA HUNTER PLEASURE CHAMPIONSHIP – AATR 19 Yrs/Over

ARABIAN/HA/AA WORKING WESTERN

ENGLISH TRAIL

77	\$50	ARABIAN ENGLISH TRAIL HORSE – Open
79	\$50	ARABIAN ENGLISH TRAIL HORSE – ATR
78	\$50	HA/AA ENGLISH TRAIL HORSE – Open
80	\$50	HA/AA ENGLISH TRAIL HORSE - ATR
332	\$75	Reg 2 ARABIAN ENGLISH TRAIL HORSE CHAMPIONSHIP
333	\$75	Reg 2 HA/AA ENGLISH TRAIL HORSE CHAMPIONSHIP
334	\$75	Reg 2 ARABIAN ENGLISH TRAIL HORSE CHAMPIONSHIP – ATR
335	\$75	Reg 2 HA/AA ENGLISH TRAIL HORSE CHAMPIONSHIP- ATR

CLASSES SORTED BY DIVISIONS

The Class Schedule, numbers and fees listed on pages 5 - 12 supersedes any information listed under Classes by Divisions

ARABIAN/HA/AA WESTERN TRAIL

81	\$50	ARABIAN WESTERN TRAIL HORSE – Open
83	\$50	ARABIAN WESTERN TRAIL HORSE – ATR
85	\$50	ARABIAN WESTERN TRAIL HORSE – Junior Horse 5 Yrs/Under
336	\$75	Reg 2 ARABIAN WESTERN TRAIL HORSE CHAMPIONSHIP – Open
338	\$75	Reg 2 ARABIAN WESTERN TRAIL HORSE CHAMPIONSHIP – ATR
340	\$75	Reg 2 ARABIAN WESTERN TRAIL HORSE CHAMPIONSHIP- AAOTR 19 Yrs/Over
341	\$75	Reg 2 ARABIAN WESTERN TRAIL CHAMPIONSHIP- Junior Horse 5 Yrs/Under
82	\$50	HA/AA WESTERN TRAIL HORSE – Open
84	\$50	HA/AA WESTERN TRAIL HORSE - ATR
86	\$50	HA/AA WESTERN TRAIL HORSE – Junior Horse 5 Yrs/Under
337	\$75	Reg 2 HA/AA WESTERN TRAIL HORSE CHAMPIONSHIP – Open
339	\$75	Reg 2 HA/AA WESTERN TRAIL HORSE CHAMPIONSHIP – ATR
342	\$75	Reg 2 HA/AA WESTERN TRAIL CHAMPIONSHIP – Junior Horse 5 Yrs/Under
87	\$40	A/HA/AA WESTERN WALK/JOG TRAIL HORSE - 10/Under
343	\$75	Reg 2 A/HA/AA WALK/JOG WESTERN TRAIL HORSE CHAMPIONSHIP – 10/Under

ARABIAN/HA/AA VRH RANCH HORSE TRAIL

88	\$50	ARABIAN RANCH TRAIL HORSE – Open
90	\$50	ARABIAN VRH RANCH HORSE TRAIL ATR
89	\$50	HA/AA VRH RANCH TRAIL HORSE – Open
91	\$50	HA/AA VRH RANCH HORSE TRAIL ATR
344	\$75	Reg 2 ARABIAN VRH RANCH TRAIL CHAMPIONSHIP – Open
346	\$75	Reg 2 ARABIAN VRH RANCH TRAIL CHAMPIONSHIP – ATR
345	\$75	Reg 2 HA/AA VRH RANCH TRAIL CHAMPIONSHIP – Open
347	\$75	Reg 2 HA/AA VRH RANCH TRAIL CHAMPIONSHIP – ATR

ARABIAN/HA/AA RANCH HORSE CONFORMATION

92	\$50	ARABIAN VRH RANCH HORSE CONFORMATION – 3 Yrs/Over Open
93	\$50	HA/AA VRH RANCH HORSE CONFORMATION – 3 Yrs/Over
321	\$75	Reg 2 VRH ARABIAN RANCH HORSE CONFIRMATION CHAMPIONSHIP – OPEN
322	\$75	Reg 2 VRH HA/AA RANCH HORSE CONFIRMATION CHAMPIONSHIP – OPEN

ARABIAN/HA/AA RANCH HORSE RIDING

94	\$50	ARABIAN RANCH HORSE RIDING - Open (Pattern #3)
96	\$50	ARABIAN RANCH HORSE RIDING – ATR (Pattern #2)
328	\$75	Reg 2 ARABIAN RANCH HORSE RIDING CHAMPIONSHIP – Open (Pattern 8)
330	\$75	Reg 2 ARABIAN RANCH HORSE RIDING CHAMPIONSHIP – ATR (Pattern 6)
95	\$50	HA/AA RANCH HORSE RIDING - Open (Pattern #3)
97	\$50	HA/AA RANCH HORSE RIDING – ATR (Pattern #2)
329	\$75	Reg 2 HA/AA RANCH HORSE RIDING CHAMPIONSHIP – Open (Pattern 8)
331	\$75	Reg 2 HA/AA RANCH HORSE RIDING CHAMPIONSHIP – ATR (Pattern 6)

ARABIAN/HA/AA RANCH HORSE RAIL

98	\$50	ARABIAN RANCH HORSE RAIL PLEASURE - OPEN
100	\$50	ARABIAN RANCH HORSE RAIL PLEASURE – ATR
324	\$75	Reg 2 ARABIAN RANCH HORSE RAIL PLEASURE CHAMPIONSHIP – Open
326	\$75	Reg 2 ARABIAN RANCH HORSE RAIL PLEASURE CHAMPIONSHIP – ATR
99	\$50	HA/AA RANCH HORSE RAIL PLEASURE - OPEN
101	\$50	HA/AA RANCH HORSE RAIL PLEASURE - ATR
325	\$75	Reg 2 HA/AA RANCH HORSE RAIL PLEASURE CHAMPIONSHIP - Open
327	\$75	Reg 2 HA/AA RANCH HORSE RAIL PLEASURE CHAMPIONSHIP - ATR

GENERAL INFORMATION

EVERY CLASS OFFERED HEREIN WHICH IS COVERED BY THE RULES AND SPECIFICATIONS OF THE CURRENT FEDERATION RULE BOOK WILL BE CONDUCTED AND JUDGED IN ACCORDANCE THEREWITH.

ACHIEVEMENT AWARD POINTS – This show is recognized by the Arabian Horse Assn. enabling exhibitors to receive Achievement Award Points in all USEF approved classes.

ADMISSION TO RING - No person will be permitted to enter the ring except participants in the class, judges, and their assistants and show officials. Attendants and grooms may enter the ring only when summoned by order of the judge. In all cases requiring grooms or other assistants, proper attire is required.

AHA MEMBERSHIP STATEMENT – EACH COMPETITOR (THIS INCLUDES AT LEAST ONE RECORDED OWNER AND ALL TRAINERS, DRIVERS, RIDERS, HALTER HANDLERS, COACHES AND THE PERSON(S) SIGNING THE ENTRY BLANK) IN AN ARABIAN HORSE ASSOCIATION RECOGNIZED ARABIAN DIVISION, AT THE TIME OF ENTRY INTO A COMPETITION, MUST SUMIT A COPY OF A VALID AHA MEMBERSHIP/COMPETITION CARD, JOIN AHA OR PAY AN AHA SINGLE EVENT MEMBERSHIP FEE PER COMPETITOR. WHEN AN AGENT SIGNS FOR THE OWNER AT AN AHA RECOGNIZED COMPETITION, BOTH THE OWNER AND THE AGENT MUST BE MEMBERS OF AHA OR PAY THE AHA SINGLE EVENT MEMBERSHIP. SINGLE EVENT MEMBERSHIP IS NOT ACCEPTABLE AT THE AHA REGIONAL OR NATIONAL COMPETITIONS. EXHIBITORS IN WALK-TROT CLASSES ARE EXEMPT FROM AHA MEMBERSHIP REQUIREMENTS AT QUALIFYING COMPETITIONS BUT MUST HAVE AN AHA MEMBERSHIP WITH COMPETITION CARD AT THE AHA REGIONAL AND NATIONAL COMPETITIONS. EXHIBITORS IN LEAD LINE CLASSES OR PARENTS/GUARDIANS SIGNING FOR MINORS ARE EXEMPT FROM AHA MEMBERSHIP REQUIREMENTS. (BOD 5/12)

AMATEUR OWNER FAMILY DEFINITION - An Amateur Owner Class is one in which every contestant is an Amateur & the rider, driver or handler is the Owner or an Amateur Member of the owner's family. "Family" includes husband, wife, parent, stepparent, child, brother, stepchild, sister, half-brother & sister, aunt, uncle, niece, nephew, grandmother, grandfather and in-laws of the same relation as stated. Combined ownership is NOT permitted in Amateur/Owner classes unless all owners are members of the same family. LEASED horses are NOT eligible.

AMATEUR OWNER CLASSES - Horses entered in an Amateur Owner or Junior Owner class MUST be registered in the name of the competitor or a member of the competitor's family (as defined by USEF GR123). Horses registered in a farm/partnership/corporation name may be shown in Amateur Owner classes provided the family is the sole owner of the farm or entity. The sale of a horse does not eliminate this registration requirement. Contract or Bill of Sale will NOT be accepted.

TWO UNRELATED OWNERS SHOWING IN OWNER CLASSES – Two non-related owners listed on registration papers can be shown in Owner Classes. Ownership MUST be an AND relationship (not an OR relationship). Co-ownership is limited to two distinct individuals (no farms or business entities). No family member or a professional may enter into this relationship. Family members of these two co-owners are NOT permitted to show in owner classes. BOTH owners must have current USEF & Amateur membership.

ARENA DIMENSIONS – The Main Arena is 125' X 250'. The El Camino Arena is 125' X 225'. Mountain View Arena and the Warm-up arena are each 125' X 250'.

ARENA FOOTINGS - The footing in the Dome arena, Mountain View and warm-up arenas consists of a sand mix. The footing in the El Camino arena consists of a mixture of sand, organic material, and dirt.

CALIFORNIA DRUG FEE – An \$14.00 fee per horse will be collected for California Drug Testing.

CRUELTY AND ABUSE - USEF GR839 & AR105 will be strictly enforced at all AHA Recognized Competitions.

CONDITION OF ENTRIES - All entries, except entries in equitation and showmanship classes must be serviceably sound. All horses must be in good condition. Horses with loss of sight in one eye may compete in any class except Breeding/Gelding In-Hand classes and Sport Horse In-Hand Classes. No horse may compete in a class in the Arabian Division with a tail carriage that has been altered in any manner or by any means. Violations of this rule are considered serious infractions because such alterations constitute misrepresentation of the breed type. No horse may compete in a class in the Arabian Division with any chemical or other irritant of any kind present on its anus, vulva, rectal area, or vaginal area, regardless of the origin of the irritant and whether it was applied, or its presence resulted from dietary, environmental, or unknown origins, and whether the horse's tail carriage was affected by its presence. Any action against the horse by an exhibitor, which are deemed excessive by a judge, Federation steward or competition veterinarian, in the competition ring or anywhere on the competition grounds may be punished by official warning, elimination or other sanctions which may be deemed appropriate by the show committee. Such action could include, but are not limited to excessive use of whip, spurs, or bamboo poles. Judges must eliminate from judging consideration any horse which shows aggression or discontent toward its handler,

GENERAL INFORMATION

rider, or any person in the ring. A judged must order from the ring any rider, driver or handler who exhibits inappropriate or dangerous behavior or whose actions would in any way threaten the safety of the exhibitor, their entries, or the safety of class officials. Horses showing signs of undue stress or inhumane treatment must be penalized. The exhibition of a horse that has a cut or abrasion showing clear evidence of fresh blood in the mouth, nose, chin, shoulder, barrel, flank, or hip area must be considered to be ineligible to receive an award in that respective class. Judges must excuse from the ring any horse that possesses a whip mark (welt) on any portion of the horse.

DECORATIONS in the front of the stalls cannot extend more than 6'. By the order of the Fire Marshall, all aisle ways between stalls must remain open. All materials used for decorative purposes must be treated with flame proofing and are subject to the approval of the Fire Department. The use of electric, open flame or space heaters is prohibited. Cooking or any heat/flame food preparation is not allowed in the stall area. Authorized electrical appliances for grooming purposes may be used in designated barn areas only. The show grounds electrical system may not be altered or tampered with under any circumstances.

DISCIPLINE - Exhibitors are warned that any act of discourtesy to the officials of this show on the part of the owner, lessee, trainer, groom, rider or driver will disqualify the horse from adjudication. The management reserves the right to remove a horse, owner, lessee, trainer, groom, or rider from the show without being liable for compensation or damages.

DISQUALIFICATION - Any horse doctored in any way, artificially, improperly or unfairly prepared or tampered with before entering the show ring will be disqualified. If it is ascertained that any exhibitor has made or caused to be made, any false statement in regard to any animal or article exhibited or if any exhibitor shall attempt to interfere with the judges in the performance of their duties, he or she shall be excluded from competing, or exhibiting. In case any animal is disqualified, the winner of the next succeeding prize in the class shall take the prize that has been awarded to such disqualified animal and the lowest moneyed prize in the class shall go to the reserve number.

DOGS OR OTHER PETS will be permitted on the grounds of the 19th District Agricultural Association but must be under leash control by owner. Any animals running free will be impounded and removed from the grounds. A \$25.00 impounding fee will be charged.

FARRIER - The show farrier will be available to exhibitors on the show grounds during all scheduled sessions.

GATE RULE - When horses are competing collectively, if a first horse does not enter the in-gate ready to participate within one minute from when the class is called into the ring, a warning is issued. Exhibitors will then have one additional minute to start the steady stream of horses into the in-gate. If no horses have entered the gate at the conclusion of the additional one minute, the gate shall be closed, and the class is deemed concluded. Once the first horse has entered the in-gate, a steady stream of horses must be maintained. Should the steady stream be broken after the two minutes have elapsed, the gate shall be closed, and judging will commence. A steady stream is defined as a constant flow of horses moving forward through the in-gate with a reasonable and safe distance between them (i.e. two to four horse or horse and buggy lengths in between). Show Management in conjunction with the Steward may deviate from this procedure as circumstances warrant.

HALF ARABIAN/ANGLO ARABIAN COLTS/STALLIONS – Half Arabian and Anglo-Arabian stallions registered with AHA or which have been issued an AHA CPAR (Canadian Part-bred Arabian Register) Permit are permitted to compete in the AHA PERFORMANCE CLASSES for Half-Arabian and Anglo-Arabian horses.

HEADGEAR – All juniors riding in Hunter Seat Equitation sections must wear properly fitting protective headgear while riding in the designated schooling & exercise areas, the show ring and while jumping anywhere on the competition grounds. Harness must be secured and properly fitted. Any rider violating this rule must immediately be prohibited from further riding until such headgear is properly in place. Any exhibitor may wear protective headgear (ASTM/SEA) in any division or class without penalty from the judge. *Affirmation of the United States Equestrian Federation Helmet/Vest Rule GR801.4 Dress -Any exhibitor may wear protective headgear(ASTM/SEI) and/or a protective safety vest, specifically designed for use in equestrian sport in any division or class without penalty from the judge. The Federation recommends that the vest meet or surpass the current ASTM standard or be certified by the Safety Equipment Institute.

HORSE OF THE YEAR AWARDS - All recognized USEF Arabian Division shows enable exhibitors to receive points in accordance with USEF GR1122-1139.

GENERAL INFORMATION

INDEMNITY AND NON-RESPONSIBILITY CLAUSES - All entries are accepted with the understanding that the ARABIAN HORSE ASSOCIATION REGION 2, AHA, THE EARL WARREN SHOWGROUNDS, and the NINETEENTH AGRICULTURAL DISTRICT OF THE STATE OF CALIFORNIA will not be held responsible for any loss, damage or injury to any horse exhibited or any article of any kind. All horses shall be under the control and direction of the Show Committee but solely at the risk of the exhibitor, who will be responsible for any loss, damage or injury to any person, animal or property occasioned by him, his agents or employees, or by an animal owned or exhibited any, and shall indemnify the ARABIAN HORSE ASSOCIATION REGION 2, AHA, THE EARL WARREN SHOWGROUNDS, and the NINETEENTH AGRICULTURAL DISTRICT OF THE STATE OF CALIFORNIA against any and all loss, damages and liability thus occasioned, including but not limited to any and all legal costs, including attorney fees, which may be incurred as a result thereof. The submitting of an entry form to the Show Secretary shall constitute an acceptance by each person signing same of the provisions herein set forth.

NO SMOKING OR ALCOHOL IS ALLOWED IN THE BARN

This is an Earl Warren Show Grounds facility & California State Law

INSURANCE ADVISORY - Due to the number and quality of horses at the show, we urge all exhibitors to verify their liability insurance, livestock surgical & mortality insurance coverage with their own insurance carrier(s). Be sure your coverage is in effect. Region 2 Arabian Horse Assn. accepts no responsibility for losses or injuries sustained.

JUDGES - If for any reason a judge fails to attend this show or perform his/her duties, the Show Committee reserves the right to substitute a judge for the one who is officially designated in the Prize List. It is a violation of USEF Rules to commit any act or make remarks during the show that are considered offensive and/or made with the intent to influence or cast aspersions on the judging. No one shall approach a judge with regard to a decision or at any time unless he first obtains permission from the Show Committee or Steward who shall arrange an appointment with the judge at a proper time and place.

JUNIOR EXHIBITORS - To be eligible, riders must not have reached their 19th birthday as of December 1st of the current competition year. The age of an individual on December 1st will be maintained throughout the entire competition year. Persons born on December 1st assume the greater age on that date. Junior exhibitors (18-year-olds) will have to take out an adult membership with USEF and they must declare if they are an amateur or pro as defined by USEF. If they fall under the definition of a pro, then they can no longer compete in the Junior exhibitor classes since they are no longer considered amateurs according to GR106, even though they are still by AHA definition a Junior exhibitor.

LEVELING INFORMATION - See AHA Rulebook Chapter 12, REG 121 for complete details. The eligibility of the exhibitor as a SELECT / CHOICE / ELITE RIDER in a section on December 1 will be maintained throughout the entire competition year. Primetime class is open to AHA members which are USEF/EC Amateurs 50 years of age or older and may participate in all disciplines. To find the rider level, go to www.arabianhorses.org, login in, click on Horse/Rider Points & Competition Records, click on Leveling Achievement Record, and search Rider Name.

LOCATION OF CLASSES - Show management reserves the right to hold classes, or portions of classes, on the grounds outside designated arenas if it is found necessary to do so, or to change and/or modify the Schedule of Events as necessary to accommodate the entries received.

MAIDEN, NOVICE AND LIMIT CLASSES – For this show, a Maiden, Novice or Limit Horse/Rider is as of the date of closing of entries (May 23)

MOTORIZED VEHICLES – Minors who do not have a valid driver's license which allows them to operate a motorized vehicle in the state in which they reside will not be permitted to operate a motorized vehicle of any kind, including, but not limited to, golf carts, motorcycles, scooters, or farm utility vehicles, on the competition grounds of licensed competitions. Minors who have a valid temporary license may operate the above described motorized vehicles as long as they are accompanied by an adult with a valid driver's license. The parent/legal guardian or individual who signs the entry blank as a parent or guardian of a minor operating a motorized vehicle in violation of this rule are solely responsible for any damages, claims, losses or actions resulting from that operation. Violations of this rule will be cause for penalties against those responsible for the child committing the offense. Wheelchairs and other mobility assistance devices for individuals with disabilities are exempt from this rule.

The unsafe use of personal electronic transport devices, as determined by the competition officials and management in their sole discretion, that do not require a driver's license to operate, including but not limited to segways, hover boards, and single wheeled scooters is prohibited on competition grounds.

Operating such devices in areas where people gather may be deemed "unsafe use" if there is a risk of harm to others. If the operator of the device is a minor, the parent/legal guardian or individual who signs the entry blank as a parent or guardian of a minor operating the device in violation of this rule is accountable and may be subject to penalties. Wheelchairs and other mobility assistance devices for individuals with disabilities are exempt from this rule.

GENERAL INFORMATION

PADDOCK EDIQUETTE FOR BREEDING/ IN-HAND HALTER CLASSES - One person may assist with entrance of in-hand horses into the ring will be allowed to use only the same length whip and appendages as are currently allowed for the individual handling the horse. Whips are to be no longer than 6' including snapper/lash/appendage. Small appendages (no more than 12 inches in length) of ribbon, plastic, etc. are permitted (Rule AR114.2). The designated person will not hit or use any other objects, such as trash cans, walls, etc. to make any noise. In addition, effective immediately, the use of plastic or paper bags of any type or size is prohibited in assisting with the entrance(s) into the arena.

PARKING - Fire regulations prohibit all vehicles including cars, trailers, vans and campers from being parked in the barn areas. Designated parking will be posted. There will be no exceptions and violations will be towed away at the owner's expense. Your cooperation will be appreciated.

POLICY ON ETHICS & SPORTSMANSHIP – In the spirit of good sportsmanship, Region 2 Arabian Horse Association has endeavored to instill the highest possible ethical standards in all of its employees and officials. We believe that high ethical standards and true sportsmanship are the hallmarks of a great and successful horse show. We further believe that the exhibitors, owners, and trainers at this horse show share these ideals. We have, therefore, instructed all judges, stewards, and other show officials to equitably enforce all USEF and AHA rules, including USEF GR302.5, AR101, AR107.5 and AR107.6.

REFUNDS & CANCELATION OF ENTRY - To encourage early entries, the Management agrees to cancel & refund fees on any horse not fit to show providing written notice from a licensed veterinarian is given to the Show Secretary on or before entry closing date (May 25). Horses may be scratched from the show at the owner's option. Refunds of entry and stall fees will be considered for any horse suffering from illness or injury upon the presentation of a veterinarian's certificate accompanied by a letter to the Show Secretary explaining the circumstances PRIOR to the start of said show. (Drug fees, Office Fees, etc. will not be refunded). Exhibitors canceling their entries for any reason after the start of said show shall forfeit all fees. Substitution of horses will be permitted (see USEF GR911).

REFUSAL OF ENTRIES - The management reserves the right to refuse, accept conditionally, or to cancel any entries of any exhibitor, as stated in USEF GR914.

REGISTRATION PAPERS REQUIRED - A copy of the current REGISTRATION PAPERS showing proof of ownership MUST be submitted with the entry form at the time of making an entry. In case of a sale or lease, a contract of sale or lease, or statement from the owner must also be submitted. *Horses entered in amateur owner and junior owner classes must be registered in the name of the competitor or a member of the competitor's family or in the name of two non-related owners registered in an "AND" ownership. Contract of sale or bill of sale will not be accepted on horses in amateur owner or junior owner classes. The sale of a horse does not eliminate this registration requirement.

RETURNED CHECKS OR DENIED CREDIT CARD - If a check is returned or credit card is denied, a return check fee or denied credit card fee of \$50.00 will be assessed. ALL fees must be paid in full by cash, cashiers check, or money order before exhibitor packet will be released.

DIRECTIONS TO EARL WARREN SHOWGROUNDS

The Earl Warren Show Grounds is located on the north side of Santa Barbara, CA. directly east of Highway 101 at the Las Positas off ramp. Follow the frontage road through the stop sign.
Exhibitors with trailers should proceed to the second entrance on the right.

GENERAL INFORMATION

RULES - This Horse Show is conducted in accordance with the rules of the US Equestrian Federation (National Equestrian Federation of the United States), Chapter AR - Arabian, Half-Arabian and Anglo-Arabian Division. The official Rule Book of US Equestrian will prevail for this show. This Prize List is based on rules of the current Rule Book; any changes or corrections of rules will automatically become a part of the Prize List. Each participant in this show is responsible for knowledge of & is subject to the USEF Rules. EVERY CLASS OFFERED HEREIN WHICH IS COVERED BY THE RULES AND SPECIFICATIONS OF THE CURRENT U.S. EQUESTRIAN RULE BOOK WILL BE CONDUCTED AND JUDGED IN ACCORDANCE THEREWITH. The Show Committee shall decide questions not covered by USEF Rules and its decisions will be final.

RV OVERNIGHT PARKING - Overnight RV camping is only allowed in designated RV Parking area on the Earl Warren Show Grounds. RV parking permit can only be reserved and paid ONLINE. Show management or show office cannot make reservations for you. Make your reservation today for the Region 2 Arabian Championship Show @ www.EarlWarren.com/rvpark

SCORING SYSTEM – MOS Scoring will be used on all Championship Show classes except Trail and Reining. COMPARATIVE JUDGING with be IN THE RING CLASS procedure will be used for Breeding/In-Hand classes for Region 2 Pre-Show & Championship Show classes. MOS scoring system will be used for the final placing of the Regional Breeding/In Hand Halter and Performance Horse Halter classes.

SCRATCHING OR CANCELING CLASSES - As a COURTESY to the GATEMAN, ANNOUNCER and SHOW OFFICE, exhibitors are requested to notify the GATEMAN and SHOW OFFICE when it is necessary to scratch or cancel a class entered. This courtesy will enable the Show to run more efficiently. Thank you for your consideration

SHARPS CONTAINERS – GR1210

4. Competition management must place a minimum of one (1) sharps container per competition, regardless of whether stabling is provided.

a. If stabling is provided, for every fifty (50) occupied stalls, one (1) sharps container must be provided for the disposal of needles and other disposable sharp instruments. These containers must be placed in visible, accessible, and convenient locations in barns housing competition horses.

b. Sharps Containers: A sharps container is made of puncture-resistant plastic with leak-resistant sides and bottom. It has a tight fitting, puncture resistant lid, which does not allow sharps to come out of the container. Sharps containers must be properly labeled to warn of hazardous waste inside the container. Sharps containers must not be altered in any way from its manufactured form, such as removal of security measures or drilling of the plastic. Sharps containers must be protected from the elements as to not collect rainwater

c. It is competition management's responsibility to dispose of contents of sharps containers when the container is three-quarters (3/4) full, in accordance with community guidelines for proper disposal methods. Competition management may fine any individuals including trainers, owners, exhibitors, or their agents up to \$100.00 for improper disposal of needles or other sharp disposable instruments.

d. If local law has more stringent requirements than the above, related to sharps containers or disposal, local law will prevail. Competitions that fail to place the required number of containers on the competition grounds or dispose of the contents properly will be considered in violation of the rules and may be subject to penalty as determined by the CEO or their designee and/or the Hearing Committee.

SPLITTING CLASSES – Classes will be considered for splitting only if there are more than 14 entries. Classes will be considered for splitting upon a request but may incur a sponsorship fee (Pre-Show \$75 / Championship \$125). Such requests must be made no later than 2 classes preceding the class to be split. Classes will be split by a draw of entry back numbers and will be posted at the "in gate" prior to the gate opening on the first section of the split. CLASS SPLITS MAY BE REQUESTED BUT THERE WILL BE NO SPLITS MADE THAT CREATE A CLASS WITH LESS THAN 3 ENTRIES.

US EQUESTRIAN FEDERATION STATEMENT - Life, senior active and junior active members shall be eligible to participate in all classes at Regular Competitions, Eventing Competitions at the Modified Level or above and Combined Driving Competitions at the Advanced Level, Dressage, Reining and Vaulting Competitions and Endurance Rides. A non-member may participate as a handler, rider, driver, owner, lessee, or agent at Regular Competitions, Eventing Competitions, Dressage Competitions, Reining Competitions and Combined Driving Competitions upon payment of a Show Pass fee. Participants in the following classes are exempted from the Requirements of this rule: 1) leadline; 2) exhibitions; 3) games and races; 4) classes for 4-H members; 5) walk trot and academy classes (academy classes are classes limited to horses used regularly in a lesson program); 6) USDF introductory level tests, pas de deux and quadrille classes; 7) assistant handlers in Dressage Sport Horse Breeding classes

GENERAL INFORMATION

USEF MEMBERS REMINDER - All USEF Life and Senior Active members, as well as participants who have regular contact with minor athletes, are required to comply with the U.S. Center for SafeSport training requirement to be eligible to participate in the competition. All participants must adhere to the U.S. Center for SafeSport Code, USEF Safe Sport Policy, and the Minor Athlete Abuse Prevention Policies. More information about these can be found at www.usef.org

USEF / DRUG FEE – For every horse participating in any competition licensed by the Federation, a \$23 Federation fee will be collected (\$15 shall be an Equine Drugs and an \$8 Medication fee to provide for research, inspection, and enforcement of rules regarding use of medication and drugs; see GR 407.1, .2 and .3). Exception: Horses entered in classes exempted from the Equine Drugs and Medication fee are also exempt from the balance of the Federation fee. The exhibitor must file an official Equine Drugs and Medications Report Form with the Show Steward or Designated Competition Office Representative within one hour after administration or one hour after the Steward or Designated Competition Office Representative returns to duty if administration is at a time other than during competition hours. The official Drugs and Medication Report Form is available from the officiating Show Steward or Designated Competition Representative.

USEF MEMBERSHIP REQUIREMENTS - Copies of every owner's, trainer's, rider's, driver's and breeding/In-hand halter handler's current USEF Membership Cards **MUST** be included with the horse show entry form at the time of entry. A non-member, who wishes to participate as a rider, driver, handler, vaulter, longer, owner, lessee, agent, coach, or trainer at a Regular Competitions must pay a Show Pass Fee for each competition in which competing. Lessees are considered owners in connection with this membership requirement. In the event of an entry have multiple owners, only one owner need be a member or pay a Show Pass Fee. The amount of the Show Pass fee will be established annually by the Federation. Unless otherwise established, the fee will be \$45.00 and must be collected by all appropriate competitions and remitted to the Federation. A Senior Active Member is those Members who are at least 18 years of age. Their annual dues are \$80.00. A Junior Active Member is those Members who have not reached their 18th birthday as provided for in GR127. Their annual dues at \$80.00.

VACCINATION RULE

1. At Federation (USEF) licensed competitions, horses entering the grounds must be accompanied by documentation of Equine Influenza Virus & Equine Herpes Virus (Rhinopneumonitis) vaccinations within six months prior to entering the stables. Horses not in compliance with this rule may be required to leave the competition grounds upon request by Competition Management. Documentation should consist of one of the following methods mentioned below. The frequency of vaccine administration should be per the vaccine manufacturers or veterinarian's recommendations. It is recommended that vaccines are administered by or under the direction of a veterinarian.
2. In the case of vaccines administered by a veterinarian, the exhibitor, upon request by Competition Management, must provide documentation from the veterinarian on documenting that the horse in question received the vaccinations, name of the vaccines and date of vaccine administration.
3. In the case of vaccines administered by a person other than a veterinarian, the exhibitor, upon request by Competition Management, must provide a receipt of the vaccine purchase which is signed by the owner, or agent with care, custody, and control of the horse; name, serial number, and expiration date of the vaccine; and date of vaccine administration.
4. In the case of a horse that is unable to receive either of the vaccinations due to a history of adverse reactions, the exhibitor, upon request by Competition Management, must provide a letter from the veterinarian on official letterhead stating that the horse in question cannot be vaccinated due to medical concerns and a log of temperatures taken twice daily for the seven days prior to entering the competition grounds. These horses must also have their temperature taken and logged twice daily while on the competition grounds. The log of temperatures should be provided to the Competition Management, steward, or technical delegate when requested.
5. Competition Management may not amend or enhance vaccination requirements without prior approval of the Veterinarian Committee.

VETERINARIAN - A veterinarian will be present throughout the show and will be available on the grounds during all scheduled sessions. All animals are subject to physical inspection by the Show Veterinarian at the discretion of the Show Committee. The Show Management reserves the right to refuse entry onto the show grounds to any horse exposed to, or which may be harboring a communicable disease. No veterinarian other than the official show veterinarian will be permitted to treat, medicate, or attend to a horse on the grounds. Anyone wishing to use another veterinarian other than the official Show Veterinarian on the grounds must obtain permission from Show Manager.

Veterinary Health Certificate and negative Coggins Test required for all horses entering California

Arabian Horse Association Show Recognition

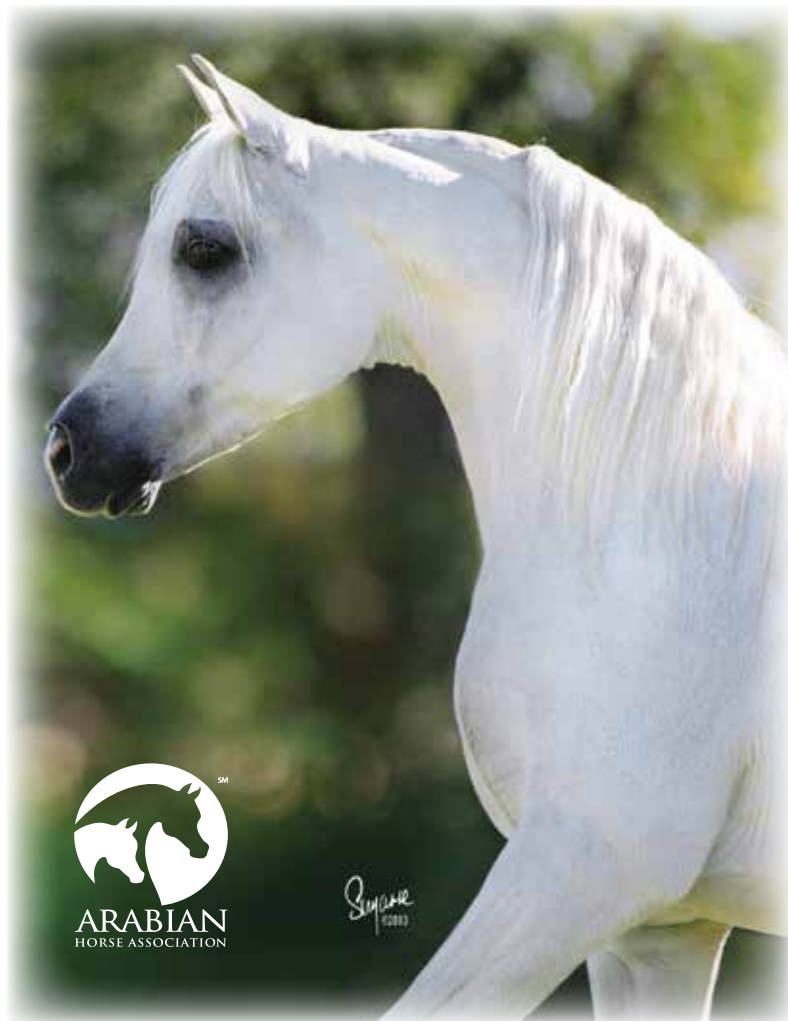
Competition Sponsor: **AHA Region 2**

AHA Recognition Show/Recording Number: **240216115 & 240216116**

The Arabian Horse Association is a major equine association serving members in the United States and Canada. It registers and maintains a database of more than one million Arabian, Half-Arabian and Anglo-Arabian horses and administers more than \$2.5 million in annual prize money. AHA produces championship events, recognizes over 375 Arabian horse shows and distance rides annually and provides activities and programs that promote breeding and ownership. For information about Arabian, Half-Arabian and Anglo-Arabian horses, call 303-696-4500, e-mail info@ArabianHorses.org or visit ArabianHorses.org.

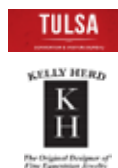
Join AHA through your local club for the following great member benefits:

- Reduced rate for competition privileges across a variety of disciplines for local, regional and national AHA-approved shows and rides
- Peace of mind with 1 million in personal liability insurance through Equisure
- Preferred rates on horse registrations and transfers
- Preferred rates on Arabian Horse DataSource, the world's largest online Arabian horse resource
- Numerous opportunities to participate in award recognition and prize money programs
- Show circuits for AHA members at local, regional and national levels



The Judges & Stewards Commissioner is responsible for handling written and signed complaints relating to judges' and stewards' conduct when filed by exhibitors, show officials, AHA members or others, and when accompanied by a filing fee [Resolution 5-90]. Other comments, compliments, questions, inquiries are encouraged when appropriate (no filing fee required). Write: Judges & Stewards Commissioner, PO Box 440949, Aurora, CO 80044-0949; (303) 696-4537.

Contact your local club: _____



Arabian Horse Association 6030 Greenwood Plaza Blvd, Suite 100, Greenwood Village, CO 80111 303.696.4500 ArabianHorses.org

AHA 090032 (Rev. 12/20)

USEF Competition Name: AHA Region 2 Pre-show and Championships

USEF#: 1020

Competition Division(s) and Rating(s):

ARABIAN, HALF/ANGLO ARABIAN, JUNIOR EXHIBITOR ARABIAN, JUNIOR EXHIBITOR HALF/ANGLO,



MAAPP

MINOR ATHLETE ABUSE PREVENTION

LEARN ABOUT MAAP POLICIES



Safe Sport Training



Local Travel



One-On-One Interactions



Social Media & Electronic Communications



Read about these & more at usef.org/MAAPP

REPORT MAAP POLICY VIOLATIONS



usef.org/safe-sport/reporting

859-225-6915 or Text Anonymously 855-682-8733





ARABIAN BREEDERS SWEEPSTAKES

Join the **GREEN** Movement

2024 ALLOCATED REGIONAL PRIZE MONEY CLASSES

ARABIAN SWEEPSTAKES CLASSES

Arabian Yearling Colt/Gelding	\$2,000
Arabian Yearling Filly	\$2,000
Arabian Gelding AOTH	\$1,000
Arabian Mares AOTH	\$1,000
Arabian English Pl Jr Horse	\$1,000
Arabian English Pl AAOTR	\$1,000
Arabian Country English Pl Jr Horse	\$1,000
Arabian Country English Pl AAOTR	\$1,000
Arabian Hunter Pl Jr Horse	\$1,000
Arabian Hunter Pl AAOTR	\$1,000
Arabian Western Pl Jr Horse	\$1,000
Arabian Western Pl AAOTR	\$1,000
Arabian Reining Jr Horse	\$1,000
Arabian Reining AAOTR	\$1,000
Arabian Western Trail Jr Horse	\$ 600
Arabian Western Trail AAOTR	\$ 600
Arabian Working Cow Jr Horse	\$ 350
Arabian Working Cow AAOTR	\$ 350
Arabian Cutting Jr Horse	\$ 350
Arabian Cutting Non-Pro	\$ 350
**Arabian SH Under Saddle AOTR	\$ 350
^Arabian Dressage Second Level AOTR	\$ 350
Arabian Regular Working Hunter AOTR	\$ 350

HALF- ARABIAN/ANGLO-ARABIAN SWEEPSTAKES CLASSES

HA/AA Yearling Colt/Gelding	\$2,000
HA/AA Yearling Filly	\$2,000
HA/AA Gelding AOTH	\$1,000
HA/AA Mares AOTH	\$1,000
HA/AA English Pl Jr Horse	\$1,000
HA/AA English Pl AAOTR	\$1,000
HA/AA Country English Pl Jr Horse	\$1,000
HA/AA Country English Pl AAOTR	\$1,000
HA/AA Hunter Pl Jr Horse	\$1,000
HA/AA Hunter Pl AAOTR	\$1,000
HA/AA Western Pl Jr Horse	\$1,000
HA/AA Western Pl AAOTR	\$1,000
HA/AA Reining Jr Horse	\$1,000
HA/AA Reining AAOTR	\$1,000
HA/AA Western Trail Jr Horse	\$ 600
HA/AA Western Trail AAOTR	\$ 600
HA/AA Working Cow Jr Horse	\$ 350
HA/AA Working Cow AAOTR	\$ 350
HA/AA Cutting Jr Horse	\$ 350
HA/AA Cutting Non-Pro	\$ 350
**HA/AA SH Under Saddle AOTR	\$ 350
^HA/AA Dressage Second Level AOTR	\$ 350
HA/AA Regular Working Hunter AOTR	\$ 350

If fewer than nine horses are in the class, 50% round up will be eligible for prize money.

Sweepstakes AAOTR classes are eligible to be split into multiple age divisions. Leveling classes will receive prize money when offered. Splitting AAOTR classes is discouraged as this reduces the Sweepstakes payout for each class split.

** Sweepstakes classes eligible to be split into Saddle/Pleasure, Stock/Hunter and/or multiple age divisions (age splits must be all inclusive). Sport Horse Classes may be split by Dressage or Hunter Type.

^At Regional Shows, the highest test will be used. At the Regional Level, these classes can be combined as Arabian/Half-Arabian/Anglo-Arabian.

	<u>\$2,000 Classes</u>	<u>\$1,000 Classes</u>	<u>\$600 Classes</u>	<u>\$350 Classes</u>
Champion	\$ 750	\$350	\$250	\$125
Reserve Champion	\$ 500	\$200	\$125	\$ 75
Remaining Top Five	\$ 250	\$150	\$ 75	\$ 50

Contact AHA at (303)696-4500, #4 or visit our website at ArabianHorses.org for additional information regarding the Sweepstakes Program.



*The Ramada by Wyndham
Santa Barbara is proud to
support the 2024 Region 2
Arabian Horse Show.*

RAMADA
BY WYNDHAM
SANTA BARBARA
sbramada.com

Ramada Santa Barbara
4770 Calle Real, Santa Barbara, CA 93110

(805) 964-3511
(800) 654-1965



tripadvisor
Consistent Top Performer



Just Minutes to Earl Warren Showgrounds (3.8 miles)

- Award winning fresh water lagoon with ducks, turtles, koi and tropical plants
- Refrigerators, microwaves, coffee makers, personal safe
- Save up to \$650 with **Ramada Santa Barbara Value Pass***
- Complimentary parking with electric charging stations
- Free deluxe continental breakfast
- Every room has a Private Patio or Balcony
- Year-round Solar Heated Pool & Whirlpool
- Complimentary Wi-Fi

**20%
Discount**

Mention
Region 2
Horse Show

Please join us on Social Media and share your photos:



/sbramada

